



ورقة مراجعة 2 | المرحلة (6-8)

الفصل الدراسي الأول | 2023-2024

المادة: الرياضيات
الصف: السادس
الشعبة ()

اسم الطالب/ة:
التاريخ: 11 / 2023
الأهداف: العمليات الحسابية على الكسور

Name	Figure	Perimeter	Area
Rectangle		مجموع قياسات أطوال الأضلاع $2(a + b)$	$A = L * W$ ab
Square		$4a$	$A = S * S$ a^2
Triangle		$a + b + c$	$A = \frac{1}{2} * b * h$

تذكر:

النشاط الاول : أوجد ناتج ما يلي بأبسط صورة .

$$1) \frac{4 \times 4}{5 \times 4} + \frac{1 \times 5}{4 \times 5} =$$

$$= \frac{16 + 5}{20}$$

$$= \frac{21}{20} = 1 \frac{1}{20}$$

$$2) \frac{1}{6} + \frac{2}{3} + \frac{1}{4} =$$

$$\frac{2 + 8 + 3}{12}$$

$$= \frac{13}{12}$$

$$= 1 \frac{1}{12}$$

$$3) 12 + \frac{4}{7} =$$

$$= 12 \frac{4}{7}$$

$$5) 2\frac{3}{8} + 5\frac{1}{6} + 6\frac{3}{4} =$$

$$= 2\frac{9}{24} + 5\frac{4}{24} + 6\frac{18}{24}$$

$$= 13 \frac{31}{24}$$

$$= 14 \frac{7}{24}$$

$$\begin{array}{r} 13 \frac{31}{24} \\ - \frac{0}{24} \\ \hline 14 \frac{7}{24} \end{array}$$

$$7) \frac{4}{5} - \frac{6}{5} =$$

$$= \frac{20 - 6}{30}$$

$$= \frac{14 \div 2}{30 \div 2} = \frac{7}{15}$$

$$9) 12 - 3\frac{5}{7} =$$

$$11 \frac{7}{7} - 3 \frac{5}{7} = 8 \frac{2}{7}$$

$$4) 5\frac{2 \times 2}{9 \times 2} + 7\frac{2 \times 3}{6 \times 3} =$$

$$= 5\frac{4}{18} + 7\frac{6}{18}$$

$$= 12 \frac{10}{18} = 12 \frac{5}{9}$$

$$6) 4\frac{7}{8} + 9\frac{2}{10} + 6 =$$

$$= 4\frac{35}{40} + 9\frac{8}{40} + 6 =$$

$$= 19 \frac{43}{40}$$

$$= 20 \frac{3}{40}$$

$$\begin{array}{r} 19 \frac{43}{40} \\ + \frac{0}{40} \\ \hline 20 \frac{3}{40} \end{array}$$

$$8) 9\frac{3 \times 2}{5 \times 2} - 2\frac{1}{10} =$$

$$= 9\frac{6}{10} - 2\frac{1}{10}$$

$$= 7\frac{5}{10} = 7\frac{1}{2}$$

$$10) 8 - 5\frac{1}{3} - 2\frac{4}{6} =$$

$$7\frac{3}{3} - 5\frac{1}{3} - 2\frac{4}{6}$$

$$2\frac{2 \times 2}{3 \times 2} - 2\frac{4}{6} = 0$$

$$11) \left(6 - 2\frac{1}{5}\right) + \left(3\frac{1 \times 2}{2 \times 2} + 1\frac{1}{4}\right) =$$

$$= \left(5\frac{5}{5} - 2\frac{1}{5}\right) + 4\frac{3}{4}$$

$$= 3\frac{4 \times 4}{5 \times 4} + 4\frac{3 \times 5}{4 \times 5}$$

$$= 7\frac{16+15}{20} = 7\frac{31}{20}$$

$$= 8\frac{11}{20}$$

$$\frac{1}{20} \sqrt{31}$$

البقي
سواء

$$12) \frac{3}{8} \times \frac{2}{15}$$

$$= \frac{1}{4} * \frac{1}{5}$$

$$= \frac{1}{20}$$

or

$$\frac{3}{8} * \frac{2}{15}$$

$$\frac{3 \div 3}{15 \div 3} * \frac{2 \div 2}{8 \div 2}$$

$$\frac{1}{5} * \frac{1}{4} = \frac{1}{20}$$

الضرب
تبدلي
 $a * b = b * a$

$$13) 10 \times 2\frac{1}{4} =$$

$$= \frac{10}{1} * \frac{9}{4}$$

$$= \frac{5}{1} * \frac{9}{2} = \frac{45}{2}$$

$$= 22\frac{1}{2}$$

$$14) 4\frac{1}{6} \times 1\frac{3}{15} =$$

$$\frac{25}{6} * \frac{18}{15}$$

$$= \frac{5}{1} * \frac{3 \div 3}{3 \div 3}$$

$$= \frac{5}{1} = 5$$

$$15) 2\frac{2}{3} \times \left(1\frac{3}{4} - 1\frac{1 \times 2}{2 \times 2}\right) =$$

$$\frac{8}{3} * \left(1\frac{3}{4} - 1\frac{2}{4}\right)$$

$$= \frac{8}{3} * \frac{1}{4} \div 4$$

$$= \frac{2}{3} * \frac{1}{1} = \frac{2}{3}$$

or $\frac{8}{4} * \frac{1}{3} = \frac{2}{1} * \frac{1}{3} = \frac{2}{3}$

$$16) \left(3 + 1\frac{2}{10}\right) \times 2\frac{3}{6} =$$

$$= 4\frac{2}{10} * 2\frac{3}{6}$$

$$= \frac{42}{10} * \frac{15}{6}$$

$$= \frac{7}{2} * \frac{3}{1} = \frac{21}{2} = 10\frac{1}{2}$$

or $\frac{42 \div 6}{6 \div 6} * \frac{15 \div 5}{10 \div 5} = \frac{7}{1} * \frac{3}{2} = \frac{21}{2} = 10\frac{1}{2}$

$\frac{a}{b} \div \frac{c}{d} \rightarrow$ keep change flip.

$$17) \frac{6}{10} \div \frac{12}{1} =$$

$$\frac{6}{10} * \frac{1}{12}$$

$$= \frac{1}{10} * \frac{1}{2} = \frac{1}{20}$$

$$18) \frac{14}{1} \div 1\frac{1}{6} =$$

$$\frac{14}{1} \div \frac{7}{6}$$

$$\frac{14}{1} * \frac{6}{7} = \frac{14}{7} * \frac{6}{1}$$

$$= 2 * 6$$

$$= 12$$

$$19) 3\frac{3}{8} \div 2\frac{1}{4} =$$

$$\frac{27}{8} \div \frac{9}{4}$$

$$\frac{27}{8} * \frac{4}{9} = \frac{27 \div 9}{8 \div 4} * \frac{4 \div 4}{9 \div 9}$$

$$= 3 * \frac{1}{2}$$

$$= \frac{3}{2} = 1\frac{1}{2}$$

$$20) 5\frac{3}{9} \div \left(1 + 1\frac{2}{3}\right) =$$

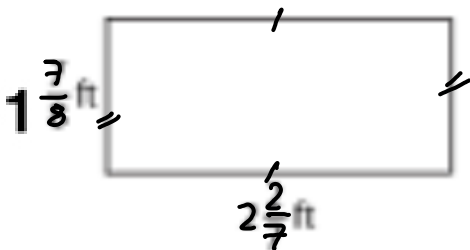
$$= \frac{48}{9} \div 2\frac{2}{3} = \frac{48}{9} * \frac{3}{8}$$

$$= \frac{48}{9} * \frac{3}{8}$$

$$= \frac{6}{3} * \frac{1}{1} = \frac{6}{3}$$

$$= 2$$

النشاط الثاني: أوجد محيط ومساحة الاشكال الاتية:



$$A = L * W$$

$$= 2\frac{2}{7} * 1\frac{7}{8}$$

$$= \frac{16 \div 8}{7} * \frac{15}{8 \div 8}$$

$$= \frac{2}{7} * \frac{15}{1}$$

$$= \frac{30}{7}$$

$$= 4\frac{2}{7} \text{ ft}^2$$

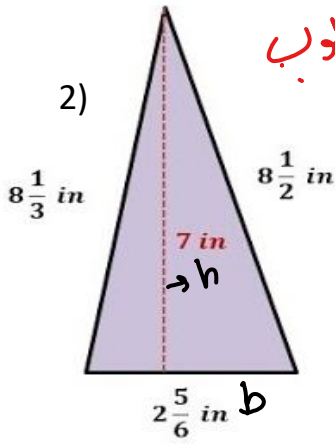
مربع مساحتها طول
الضلع

$$P = 2\frac{2 \times 8}{7 \times 8} + 1\frac{7 \times 7}{8 \times 7} + 2\frac{2 \times 8}{7 \times 8} + 1\frac{7 \times 7}{8 \times 7}$$

$$= 6 \frac{16 + 49 + 16 + 49}{56}$$

$$= 6 \frac{130}{56}$$

$$= 8 \frac{18}{56} \text{ ft}$$



غير مطلوب

$$A = \frac{1}{2}bh$$

$$= \frac{1}{2} * 2\frac{5}{6} * 7$$

$$= \frac{1}{2} * \frac{17}{6} * 7$$

$$= \frac{119}{12}$$

$$A = 9\frac{11}{12} \text{ in}^2$$

$$\begin{array}{r} 9 \\ 12 \overline{) 119} \\ \underline{108} \\ 11 \end{array}$$

مطلوب

مجموع قياسات أطوال المثلث

$$= 8\frac{1 \times 2}{3 \times 2} + 8\frac{1 \times 3}{2 \times 3} + 2\frac{5}{6}$$

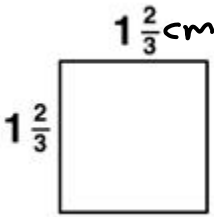
$$= 18\frac{2+3+5}{6}$$

$$= 18\frac{10}{6}$$

$$P = 19\frac{4}{6} \text{ in}$$

مطلوب

3)



$$A = S * S$$

$$= 1\frac{2}{3} * 1\frac{2}{3}$$

$$= \frac{5}{3} * \frac{5}{3}$$

$$A = \frac{25}{9} = 2\frac{7}{9} \text{ cm}^2$$

$$P = 4 * S$$

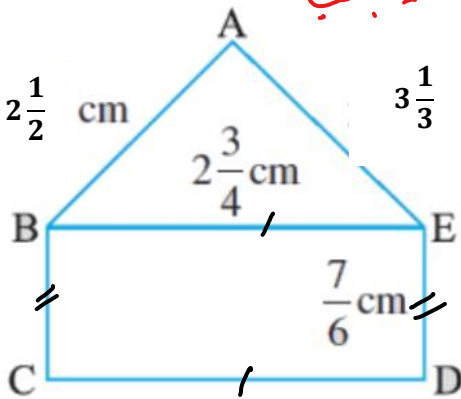
$$= 4 * 1\frac{2}{3}$$

$$= \frac{4}{1} * \frac{5}{3}$$

$$= \frac{20}{3} = 6\frac{2}{3} \text{ cm}$$

غير مطلوب

النشاط الثالث: (1) أوجد محيط الشكل المجاور. لفتنا جمع



مجموع قياسات أطوال المثلث

$$= 2\frac{1 \times 6}{2} + 3\frac{1 \times 4}{3} + \frac{7 \times 2}{6} + 2\frac{3 \times 3}{4} + \frac{7 \times 2}{6}$$

$$= 7\frac{6+4+14+9+14}{12}$$

$$= 7\frac{47}{12}$$

$$P = 10\frac{11}{12} \text{ cm}$$

$$\begin{array}{r} 3 \\ 12 \overline{) 47} \\ \underline{-36} \\ 11 \end{array}$$

القاسم المشترك

(2) كتاب الطالب صفحة 61 + 65 :

هندسة: إذا كان مُحيطُ مُرَبَّعٍ $\frac{9}{11}$ m، فما طولُ ضِلْعِهِ؟

$$\begin{aligned}P &= 4S \\ S &= P \div 4 \\ &= \frac{9}{11} * \frac{1}{4} \\ &= \frac{9}{44} \text{ m}\end{aligned}$$

هندسة: مُضَلَّعٌ مُنْتَظَمٌ، مُحيطُهُ $18\frac{2}{3}$ cm، وطولُ ضِلْعِهِ $2\frac{1}{3}$ cm، ما عَدَدُ أَضْلَاعِهِ؟

$$\begin{aligned}n &= P \div S \\ n &= 18\frac{2}{3} \div 2\frac{1}{3} \\ &= \frac{56}{3} \div \frac{7}{3} = \frac{56}{3} * \frac{3}{7} = \frac{8}{1} * \frac{1}{1} \\ &= 8\end{aligned}$$

(3) كتاب الطالب صفحة 64 :

إذا كان $y = 1\frac{3}{22}$ و $x = \frac{5}{11}$ ، فأجِدْ قِيَمَةَ كُلِّ مِمَّا يَأْتِي:

9 $x + y$

$$\begin{aligned}&= \frac{5}{11} + 1\frac{3}{22} \\ &= \frac{10}{22} + 1\frac{3}{22} \\ &= 1\frac{13}{22}\end{aligned}$$

10 $y \times x$

$$\begin{aligned}&1\frac{3}{22} * \frac{5}{11} \\ &\frac{25}{22} * \frac{5}{11} = \frac{125}{242}\end{aligned}$$

11 $x \div y$

$$\begin{aligned}&\frac{5}{11} \div \frac{25}{22} \\ &\frac{5}{11} * \frac{22}{25} = 1 * \frac{2}{5} \\ &= \frac{2}{5}\end{aligned}$$

12 $y \div x$

$$\begin{aligned}&\frac{25}{22} \div \frac{5}{11} \\ &= \frac{25}{22} * \frac{11}{5} \\ &= \frac{5}{2} * \frac{1}{1} = \frac{5}{2} = 2\frac{1}{2}\end{aligned}$$