

Activity | Secondary Stage of (6-8)

1st Semester | 2023-2024

Subject: Biology

The structure of a flowering plant

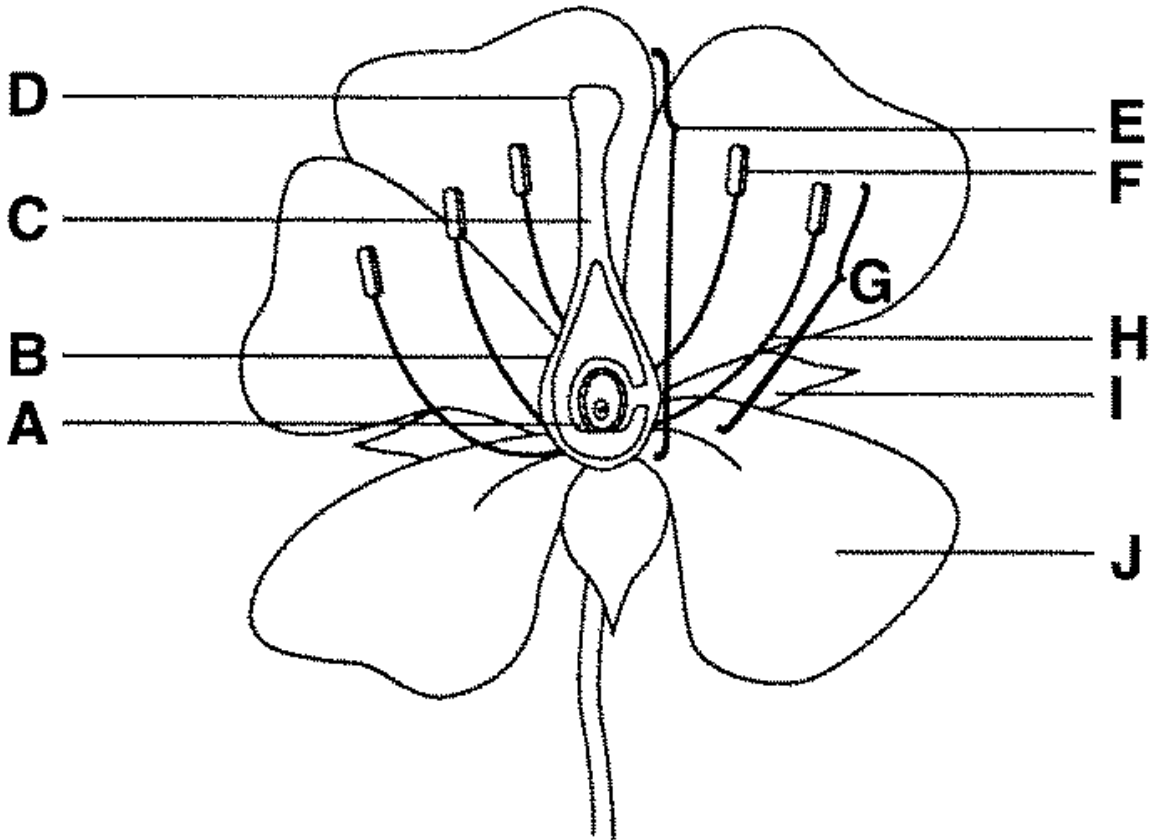
Name :

Objectives: label the parts of a flowering plant and describe their function .

Part 1 :

Watch the video then **Label** the parts of a flowering plants on the diagram below <https://www.youtube.com/watch?v=h077JEQ8w6g>

<https://www.youtube.com/watch?v=HdAcU9uhpWU>



Part 2:

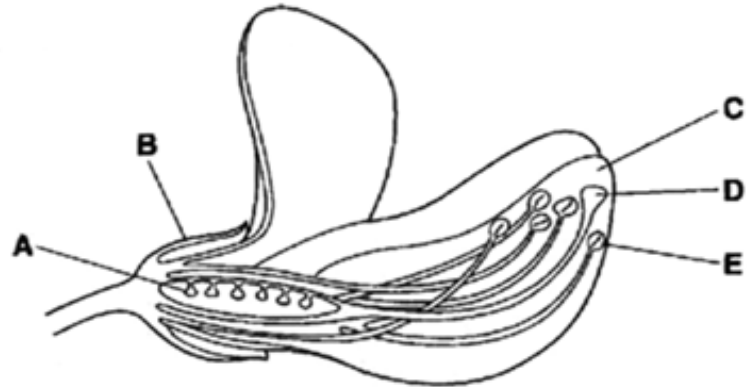
Describe the function of each part labelled above

Part	Letter	Function
Stigma	D	Receives the pollen during pollination
Style	C	Transports the pollen to the ovary for fertilization through the pollen tube.
Ovary	B	Where fertilization occurs.
Ovule	A	Contains the female gamete
Carpel	E	The female parts of the flower
Anther	F	Releases the pollen
Filament	H	Supports anther
Stamen	G	The male parts of the flower
Sepal	I	Protect the flower when it is a bud
Petal	J	Attract insects for pollination

Part 3 :

Answer the question below .

1. The figure below shows a section through a bean flower.



Name the parts labelled **A ,D and E**

- A ovule
- D stigma
- E anther

2. State a role for each of the following: sepal, anther, stigma, ovary.

Sepals Protect the flower when it is a bud.

Anther Releases the pollen.

Stigma Receives the pollen during pollination.

Ovary Where fertilization occurs.