

# Science Worksheet #3/ Term 2

## Looking at plants

Name: \_\_\_\_\_ **Answer Key** \_\_\_\_\_

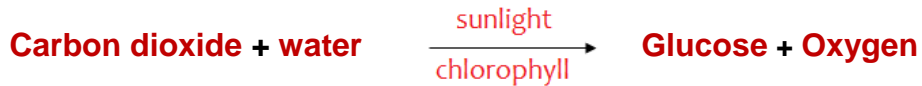
Grade **7A**

Date: **/5/2023**

1 – Suggest some uses for each of the following plants.

Plant	Uses
Oak tree	<b>building / fuel / furniture</b>
Lavender	<b>herbal medicine / aroma</b>
Cotton	<b>fabric</b>
Palm tree	<b>food/ leaves for baskets</b>

2 – a) Write the photosynthesis word equation.



b) Write the photosynthesis chemical equation.



3- a) A leaf has been kept in the light for five days.

What colour will it be when tested with iodine? **blue-black**

b) The leaf is then kept in the dark for five days.

Now what colour will it be when tested when with iodine? Explain your answer.

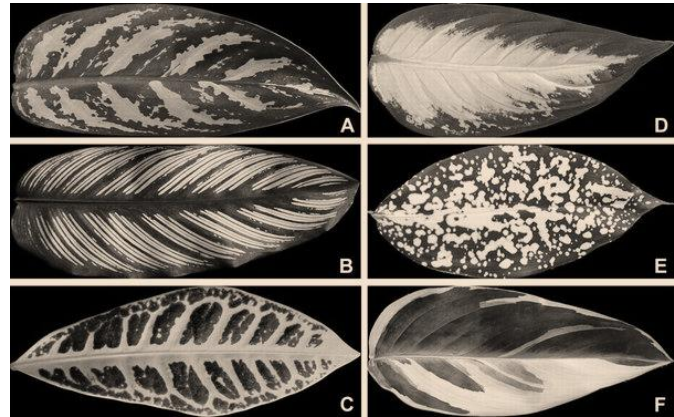
**Orange; starch only forms when light is available to provide energy for photosynthesis.**

4- A leaf has been kept in a sealed jar without carbon dioxide for five days.

What colour will it be when tested with iodine? **Orange**

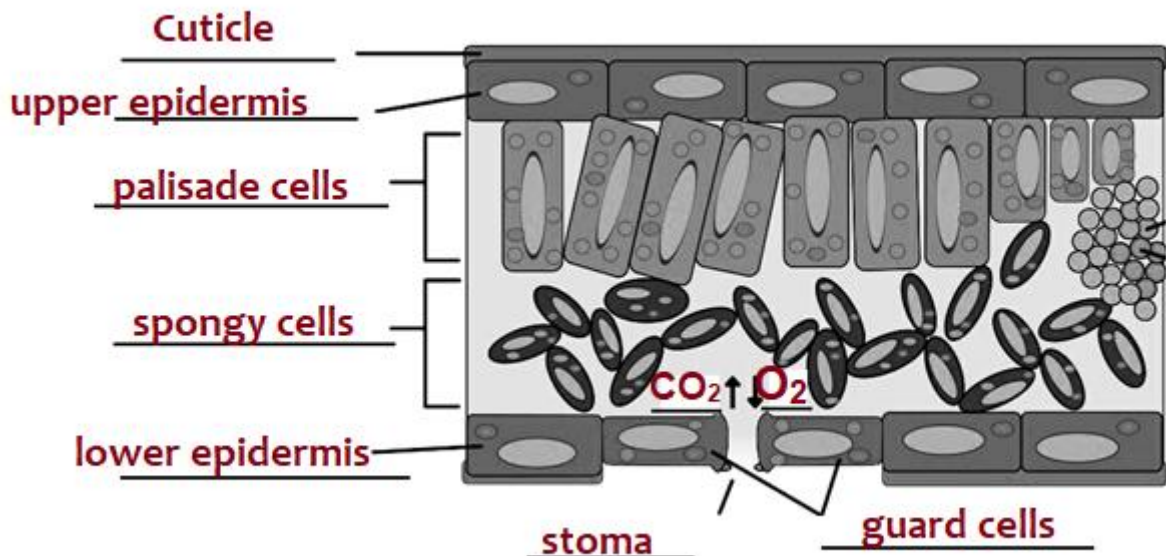
5- What do think would happen if you tested with iodine on one of the leaves in the figure?

Explain your answer.



The leaf would stay orange in the white areas, and turn blue-black in the green areas because starch is only made in areas containing chlorophyll.

6- Label the plant layers / cells in the following diagram.





- In which layers/ cells does photosynthesis take place?

**In cells containing chloroplasts; mainly palisade cells.**

---

- How does gas exchange take place in a leaf?

**CO<sub>2</sub> diffuses in through the stomata and moves through the leaf in the air spaces in the spongy layer. O<sub>2</sub> passes through the air spaces and out of the stomata.**

---

- What do stomata do?

**They allow substances to pass in and out of the leaf.**

---

- Why are the stomata not found on the top layer of the leaf?

**Too much water would evaporate.**

---