

1) a) 34mm      3.7cm      2cm8mm      32mm      3.6cm

Change all  $\frac{34 \div 10}{\text{To cm}}$  3.4cm      3.7cm       $2 + 0.8 =$   
2.8cm      3.2cm      3.6cm

OR  
 mm 34mm       $3.7 \times 10$   
 37mm       $20 + 8 = 28\text{mm}$       32mm       $3.6 \times 10$   
 36mm

ORDER: 2.8cm      3.2cm      3.4cm      3.6cm      3.7cm  
 28mm      32mm      34mm      36mm      37mm

---

b) 89cm      1.2m      1m88cm      136cm      2.02m

In cm      89cm      120cm       $1 \times 100 + 88\text{cm}$       136cm      202cm  
 $1.2 \times 100$        $188\text{cm}$        $2.02 \times 100 =$

In m       $0.89\text{m}$       1.2m       $1.88\text{m}$       1.36m      2.02m  
 $89 \div 100$        $1 + 0.88$        $136 \div 100$

ORDER: 0.89m      1.20m      1.36m      1.88m      2.02m  
 89cm      120cm      136cm      188cm      202cm

---

c) 98.4 Km      8934cm      100.1km      78km98m      8893m

In (m)       $98.4 \times 1000$        $8934 \div 100$        $100.1 \times 1000$        $78 \times 1000$   
 $98400\text{m}$        $89.34\text{m}$        $100,100\text{m}$        $78000 + 98$       8893m  
 $78098\text{m}$

In (km)      98.4 Km      0.08934km      100.1 Km      78.098km      8.893  
 $98 \div 1000 = 0.098$   
 $0.098 + 76.00$

Order: 89.34m      8893m      78,098m      98,400m      100,100m

---

2) @ 50.2Kg      4500g      4Kg480g      5389g      49.33kg

In (kg)      50.2Kg      4.5Kg       $480 \div 1000$        $5389 \div 1000$       49.331  
 $4500 \div 1000$        $0.480$        $5.389\text{Kg}$       49.331

In g      50,200g      4500g       $4 + 0.480$       5389g      49330  
 $4.480\text{Kg}$        $4,480\text{g}$       5389g      49330

ORDER (g) 50,200g      49,330g      5,389g      4,500g      4,480g  
 (Kg) 50.2Kg      49.330kg      5.389Kg      4.5Kg      4.480kg



b) 2307g      24.32kg      22kg180g      2319g      25.01kg  
 In(g) 2307g      24320g      22,180g      2319g      25010g  
 In(kg) 2.307kg      24.32kg      22.180kg      2.319kg      25.01kg  
 $2307 \div 1000$

**ORDER:** 25.01kg      24.32kg      22.180kg      2.319kg      2.307kg

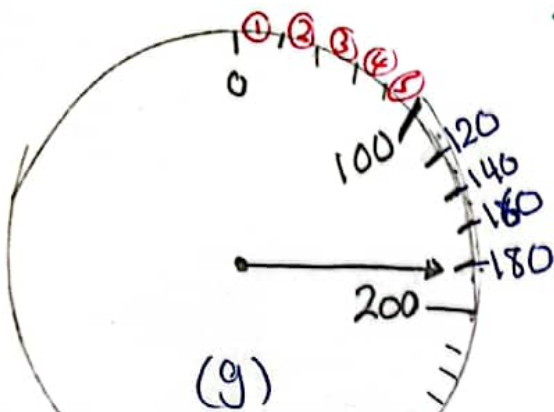
c) 18.84kg      846g      30.467kg      15kg73g      2280g  
 in(kg) 18.84kg       $846 \div 1000$   
                                  0.846kg      30.467kg       $73 \div 1000$   
    0.073kg      2280  $\div$  1000  
    2.280kg  
 In(g) 18,840g      846g      30,467g      15,073kg      2280g  
 $15 + 0.073$   
 $15.073 \text{ kg}$   
~~15.073g~~  
**ORDER** 30,467g      18,840g      15,073g      2280g      846g

③ (a) 2305mL      25.4L      22L85mL      2320mL      24.65L  
 (L)  $2305 \div 1000$   
                                  2.305L      25.4L       $85 \div 1000 =$   
    0.085L      2.320L      24.65L  
 mL 2305mL      25,400mL      22,085mL      2320mL      24,650mL  
 $22,085 \text{ mL}$   
**ORDER:** 25.4L      24.65L      22.085L      2.320L      2.305L

b) 1.3L      1,103mL      1.25L      1L880mL      1.45L  
 (L) 1.3L       $1,103 \div 1000 =$   
                                  1.103L      1.25L      1.880L      1.45L  
 (mL)  $1.3 \times 1000$   
                                  1,300mL      1,103mL      1,250mL      1,880mL      1,450mL  
**ORDER** 1,880mL      1,450mL      1,300mL      1,250mL      1,103mL

c) 15.38L      1845mL      22L 20mL      54.15L      2461mL  
 (L) 15.38L       $1845 \div 1000$   
                                  1.845L       $20 \div 1000 =$   
    0.020L      54.15L       $2461 \div 1000$   
 (mL) 15,380mL      1,845mL      22,020mL      54,150mL      2,461mL  
**ORDER** 54,150mL      22,020mL      15,380mL      2,461mL      1,845  
 54.15L      22.020L      15.38L      2.461L      1.845

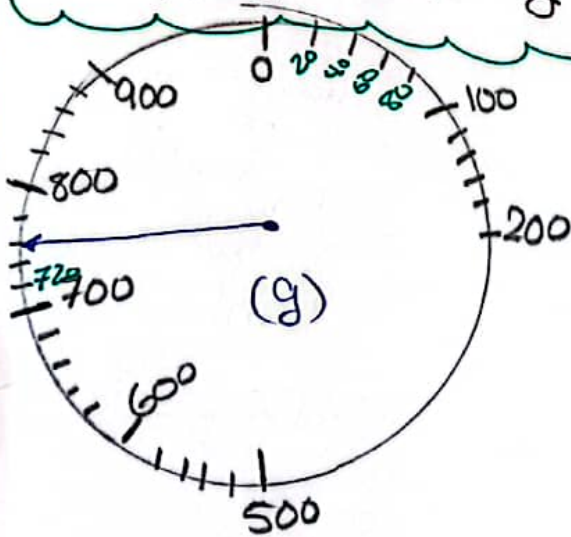
$100 - 0 = 100$



5 spaces between 0 and 100

$\frac{100}{5} = 20 \Rightarrow$  skip count by 20g

$180g = 0.180kg$



$100 - 0 = 100$

$\frac{100}{5} = 20$

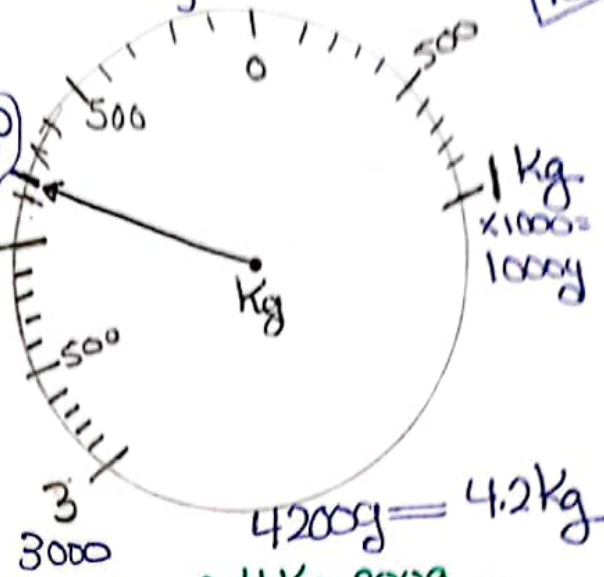
skip by 20g

$760g = 0.760kg$

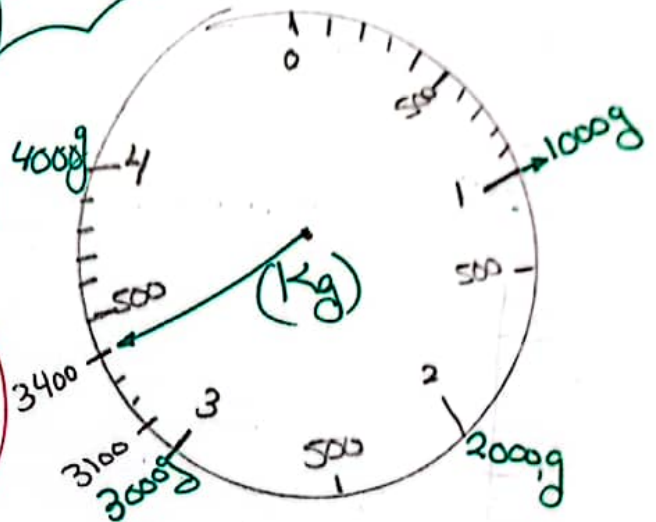
$500 - 0 = 500$

$\frac{500}{5} = 100$

skip by 100g



$4200g = 4.2kg$   
OR  $4kg\ 200g$



$500 - 0 = 500$

$\frac{500}{5} = 100$

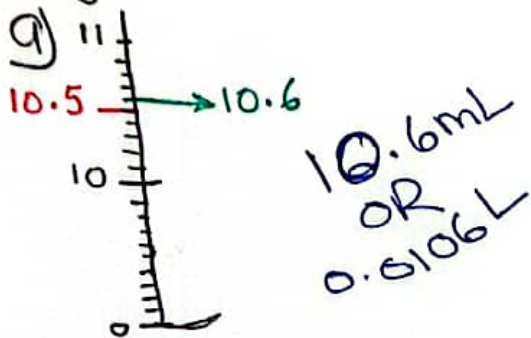
skip by 100


$3400g = 3.4kg$

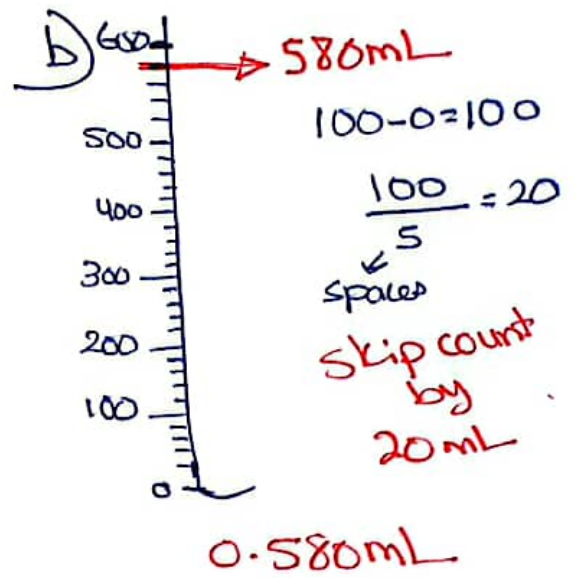
OR

$3kg\ 400g$

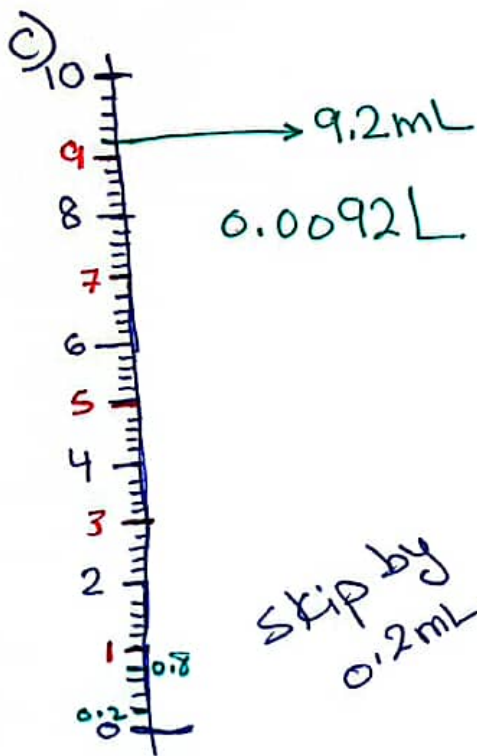




From 0 to 10  $\rightarrow$  10 spaces  
 Like # Line   
 skip count by 0.1



d) same as above  
 skip by 20 mL  
 920 mL  
 0.920 L



2 - 0 = 2  
 $\frac{2}{10} = 0.2$   
 ↓  
 spaces