

The Primary Stage of Grades (4-5) School Year 2022- 2023

Name: Answer key

Subject: Science

Science Final Revision Sheet

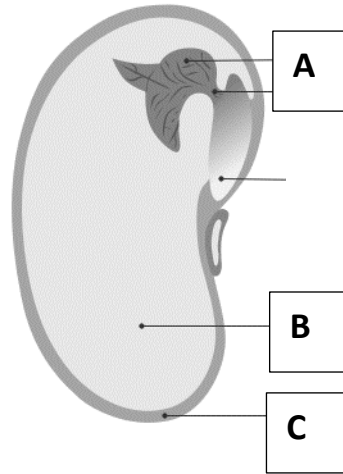
Date: / /

Class: Grade 4 CP (All sections)

Question 1:

Name the parts of the seed below and write the function of each part:

Parts of a Seed



Name of the part	Function of the part
A. Embryo	It is the baby plant.
B. Food storage	Where Food is stored to give energy for the baby plant.
C. Seed coat	To protect the seed from insect and infections.

Question 2:

- a. Plants are adapted to disperse seeds in different ways.

Complete the table to identify the type of seed dispersal for each description.

plant	description	type of seed dispersal
A	seeds are large and lightweight so they float	water
B	seeds have tiny hooks on them so they attach to things	Animals
C	seeds have wings and are lightweight so they move in air	Wind
D	seeds are found inside fruits so they are eaten	Animals

- b. Which stage in the life cycle of a flower happens just after pollination?

Circle the correct answer.

fertilisation

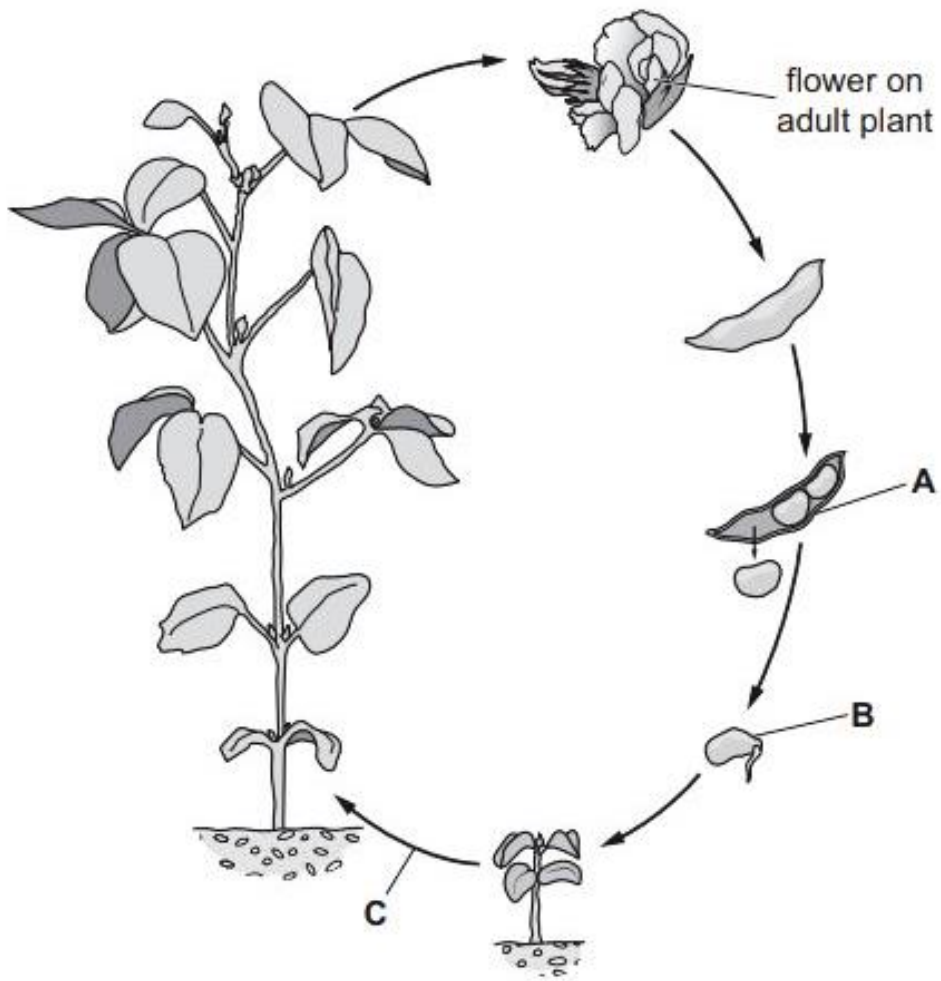
fruit production

germination

seed production

Question 3:

The diagram shows some of the stages in the life cycle of a plant.



Draw a line to match each **label** with the **description** it shows.

label

description

A

fertilisation

B

germination

C

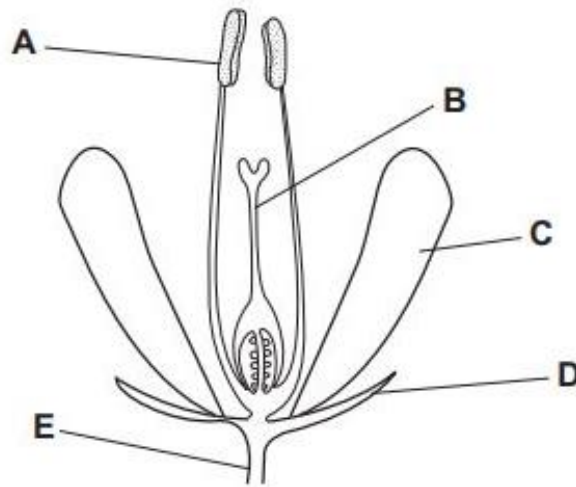
growth

pollination

seed dispersal

Question 4:

1) The diagram shows parts of a flower.



(a) Which part of the flower is a **male** organ?

Circle the correct answer.

A **B** **C** **D** **E**

(b) Which part of the flower is a **female** organ?

Circle the correct answer.

A **B** **C** **D** **E**

(c) Name the parts mentioned below and state the function of each part:

Part A: name: Anther.....

Function: It produces pollen grains......

Part C: name: Petals.....

Function: It is the colorful part to attract insect, also it protects the male and female part.

Question 5:

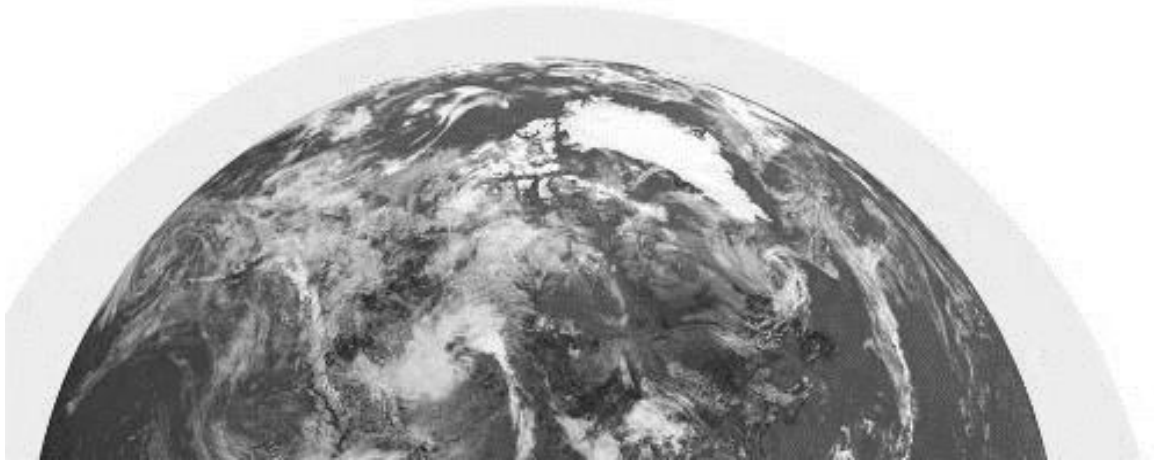
- 1) Which of these gases is found in the most amount in the atmosphere?
Circle the correct answer.

carbon dioxide

nitrogen

oxygen

water vapour



- 2) Draw a line to match each term with the correct meaning:

term

meaning

precipitation

The layer of air surrounding Earth

The water cycle

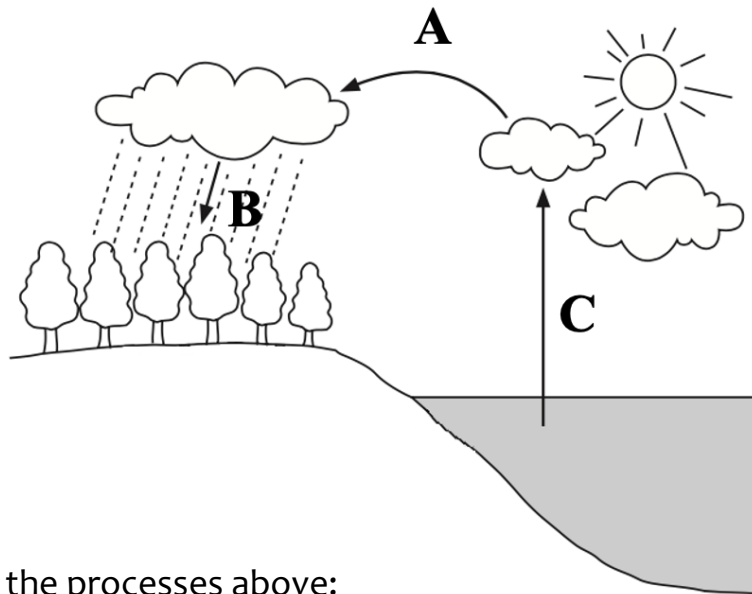
water that falls from the clouds onto the Earth

Atmosphere

The continuous movement of water from the Earth surface to the sky and back to Earth

Question 6:

The diagram below shows the water cycle.



1) Name the processes above:

Process A: **Condensation**

Process B: **Precipitation**

Process C: **Evaporation**

2) Water moves through the water cycle in different processes.

Tick (✓) the correct box beside each statement.

	True	False
Condensation is part of the water cycle.	<input checked="" type="checkbox"/>	<input type="checkbox"/>
The process of water changing into a gas is called precipitation.	<input type="checkbox"/>	<input checked="" type="checkbox"/>
Water falls back to the ground in a process called evaporation.	<input type="checkbox"/>	<input checked="" type="checkbox"/>

Question 7:

Mia investigates seed germination.

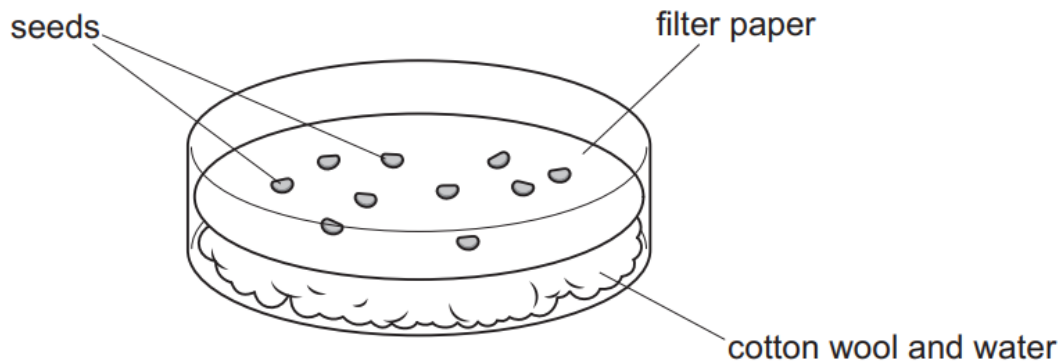
Mia has four dishes **A**, **B**, **C** and **D**.

Into each dish she puts:

- filter paper
- cotton wool
- seeds
- 3 cm³ of water.

She puts the dishes in different places for five days.

The diagram shows dish **A**.



Here are her results.

dish	number of seeds in each dish	light or dark	warm or cold	number of seeds germinated
A	10	light	warm	8
B	8	light	cold	1
C	10	dark	warm	7
D	9	dark	cold	0

(a) What is the **dependent** variable in Mia's investigation?

She is investigating the number of seed that will germinate.

(b) Mia's investigation is **not** a fair test.

Describe how Mia improves her investigation to make it a fair test.

To put the same number of seeds in each dish.

(c) Use the results in the table to complete the sentences.

A condition needed for these seeds to germinate is **Warmth**

The evidence in the table is **Most seeds germinated in warmth.**

A condition **not** needed for these seeds to germinate is **Light**

The evidence in the table is **Seeds in dish C germinated,**
while seeds in dish A germinated also even there is light.

(d) What does a seed need for germination?

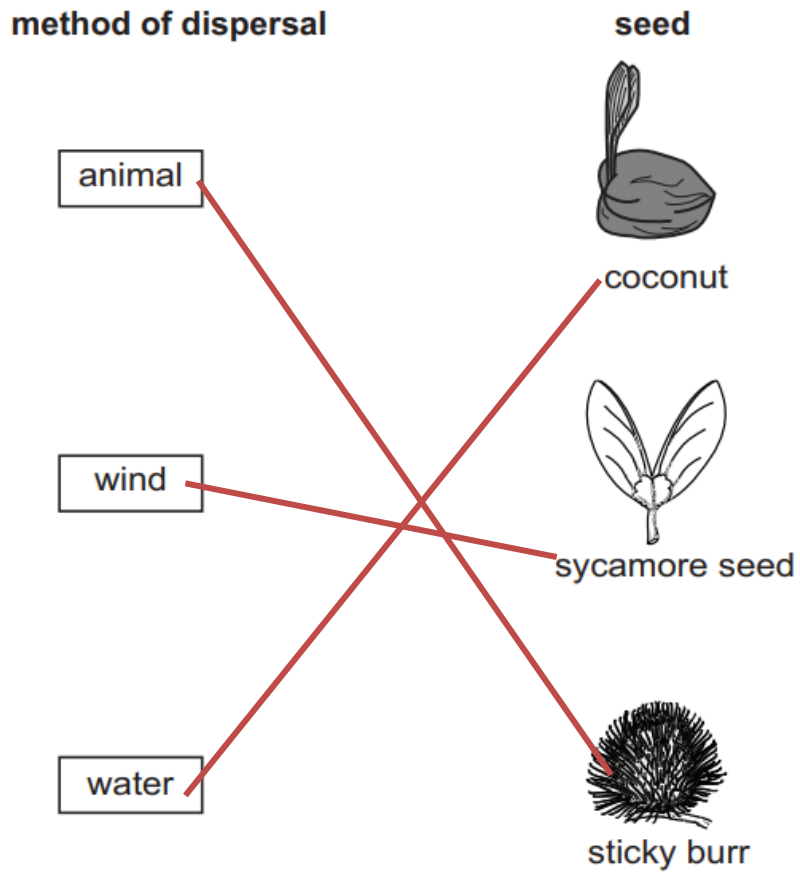
Tick (✓) the correct statement.

- air and water only
- water and a suitable temperature only
- air, water and a suitable temperature

Question 8:

Seeds have different methods of dispersal.

(a) Draw a line to match the **method of dispersal** to the correct **seed**.



(b) Name one **other** method of seed dispersal.

Explosion

(c) Here is a picture of a strawberry.



Describe how animals disperse the seeds of a strawberry.

Animals eat strawberry and the seeds pass through their body and leave the body with the droppings somewhere away from the mother plant.