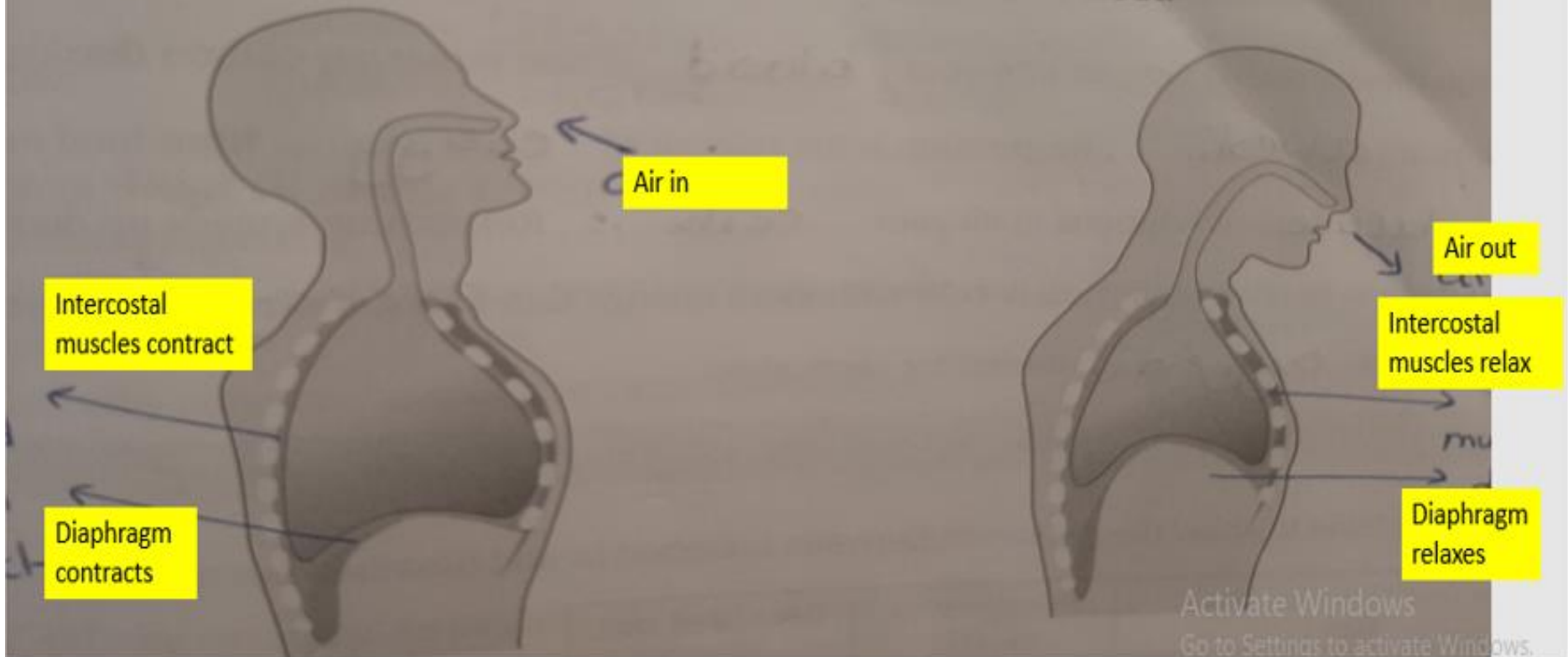


Workbook page 55

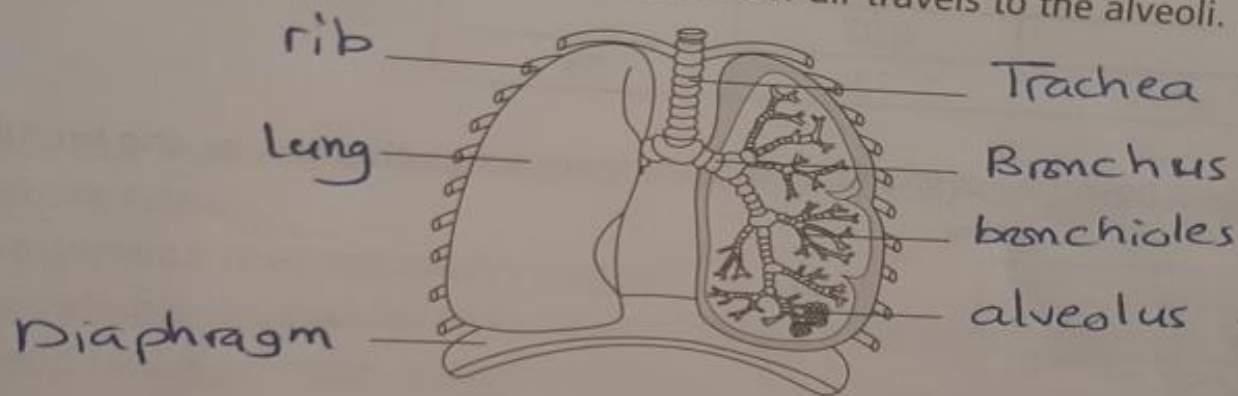
Question 1

Use the diagram below to show how we breathe in and out.



Question 2 & 3 page 55 / workbook

- 2) Label the diagram below. Then add arrows to show how air travels to the alveoli.



- 3) Read the following paragraph and fill in the gaps with words from the box below.

Your diaphragm, and .. muscles between your ribs, make air move in and out of your lungs It travels through the trachea, bronchi, and bronchioles to ... alveoli In the alveoli, oxygen diffuses into the blood and carbon dioxide leaves This is gas exchange ..

alveoli ribs diffuses leaves bronchioles exchange lungs muscles

