

The Primary Stage of Grades (4-5)  
School Year 2022- 2023

Name: \_\_\_\_\_ **Answer key** \_\_\_\_\_

Subject: Science

Unit 1: Flowering plants

Worksheet 4: Germination

Class: Grade 4 CP (All sections)

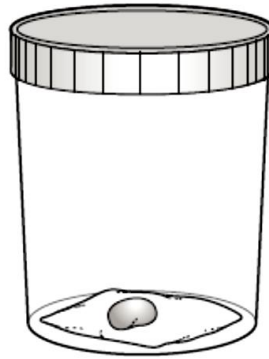
Date: / /

**Objective/s:**

- Investigate plant's growth and seed germination.

**Question 1:**

A bean seed is placed in a jar.



(b) The seed will start to grow (germinate) in the right conditions.

Which part of the plant grows first when the seed germinates?

**Roots**  
.....

(c) Seeds do not need light to germinate. Why is this?

Tick (✓) **one** box.

They can grow without food.

They can make food without light.

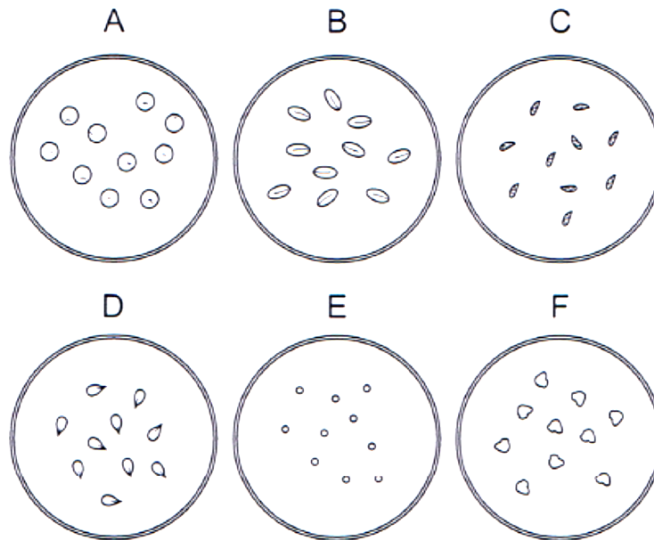
They have their own store of food.

They receive food from their parents.

**Question 2:**

Maja and Ivan investigate seeds growing.

Here are the six different **types** of seed they use.



(a) Maja and Ivan give the seeds  $8\text{cm}^3$  of water.

Circle the equipment they use.

beaker

cup

measuring cylinder

test tube

(b) Maja and Ivan want to make their investigation fair.

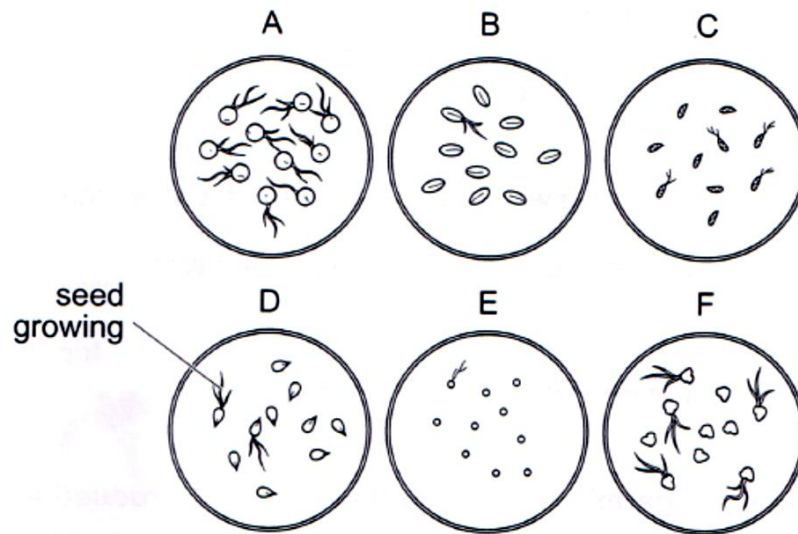
They give all the seeds the **same** amount of water.

Write **one other** fair test they can make when growing the seeds.

1- Put them in the same place (Same temperature).

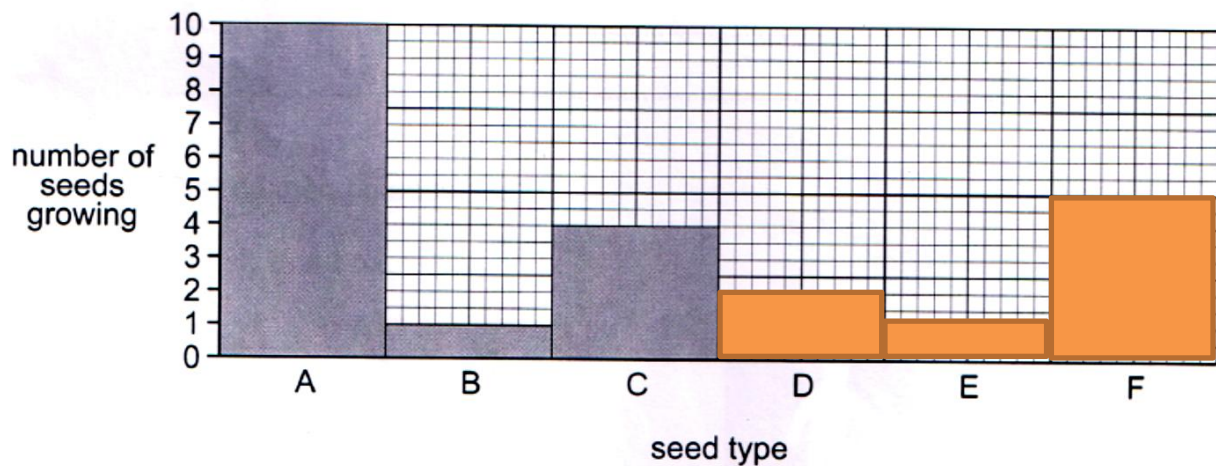
2- Same number of seeds.

Here are their results.



(c) Maja and Ivan start to draw a bar chart.

Complete their bar chart.



(d) Maja and Ivan are not sure their results are correct.

What can they do to check this?

To repeat the investigation another time.

(e) Complete the sentence to write a conclusion for this investigation.

The seeds that started to grow the best were seed type A

**Question 3:**

This picture shows the stages of germination of a seed.



Which statements are true about the germination of the seed?  
Tick the **three** correct answers.

All roots grow first before the stem and the leaves.

The roots grow downwards while the stem grows upwards.

The seed makes food by using light.

The seed is able to grow in the dark.

The seedling is able to grow in the dark.

The leaves of the seedling make food by using light