

**The Primary Stage of Grades (4-5)**  
**School Year 2022- 2023**

Name: \_\_\_\_\_ **Answer key** \_\_\_\_\_

**Subject: Science**  
**Unit 1: Flowering plants**  
**Worksheet 2: Pollination and fertilization**  
**Class: Grade 4 CP (All sections)**

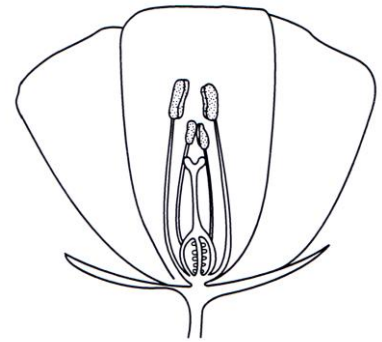
Date: / /

**Objective/s:**

- Name the stages in the life cycle of flowering plant
- Describe how flowering plants reproduce.

**Questions:**

**1. Here is a diagram of a flower.**



To make seeds pollen and ovule join together.  
What is this process called?

**Fertilization**.....

**2. (a) Why do flowers have petals?**

**To attract insects.**.....

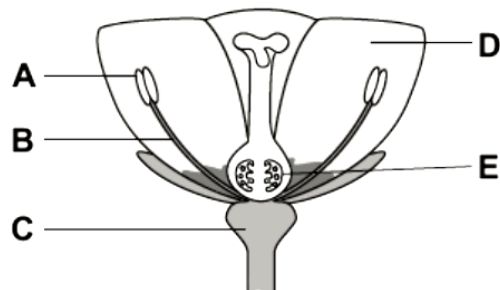
**(b) Circle the part of the flower which produces pollen.**

anther      carpel      ovary

**(c) Circle a female part of the flower.**

3. Many plants have flowers.

(a) Look at this flower.



Which letter shows the **female** part of this flower?

Circle the correct answer.

A

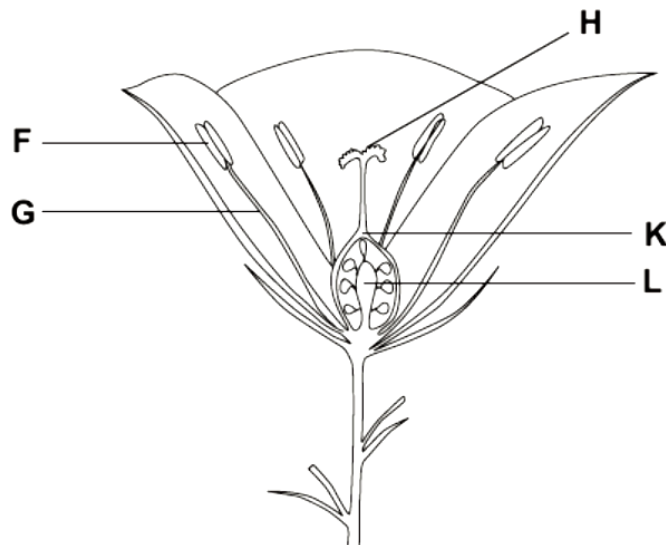
B

C

D

**E**

(b) Look at this flower.



Which **two** letters show the **male** parts of this flower?

Circle the correct answer.

**F and G**

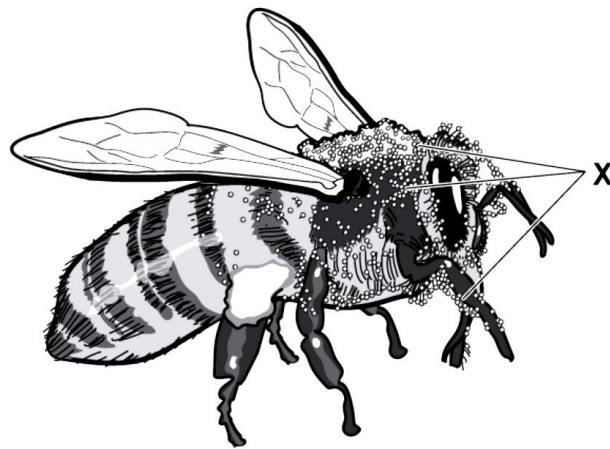
G and H

H and K

K and L

4. A bee visits a flower.

The bee has little particles from the flower stuck to it.



The particles are labelled **X** on the picture.

(a) Write down the name of the particles.

**Pollen**

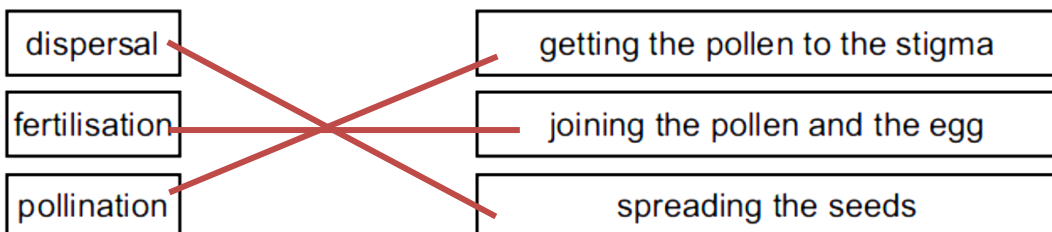
(b) The bee's visit to the flower helps with a process in the life cycle of the plant.

Write down the name of this process.

**Pollination**

5. Flowering plants have a life cycle.

Draw lines to match the stages of the plant life cycle to what happens.



6. Grade four students investigated the ways **flowers A and B** are pollinated. **Flower A** had big and colorful petals; **flower B** had pale and very tiny petals.

**Suggest how flower A and B would be pollinated?**

**Flower A:**

**Insect pollinated, since it has big colorful petals and scent to attract insects.**



**Flower B:**

**Wind pollinated, since it has tiny petals that are dull and pale.**

