

The Primary Stage of Grades (4-5) School Year 2022- 2023

Name: _____

Subject: Science

Unit 1: Flowering plants

Worksheet 1: Parts of flower

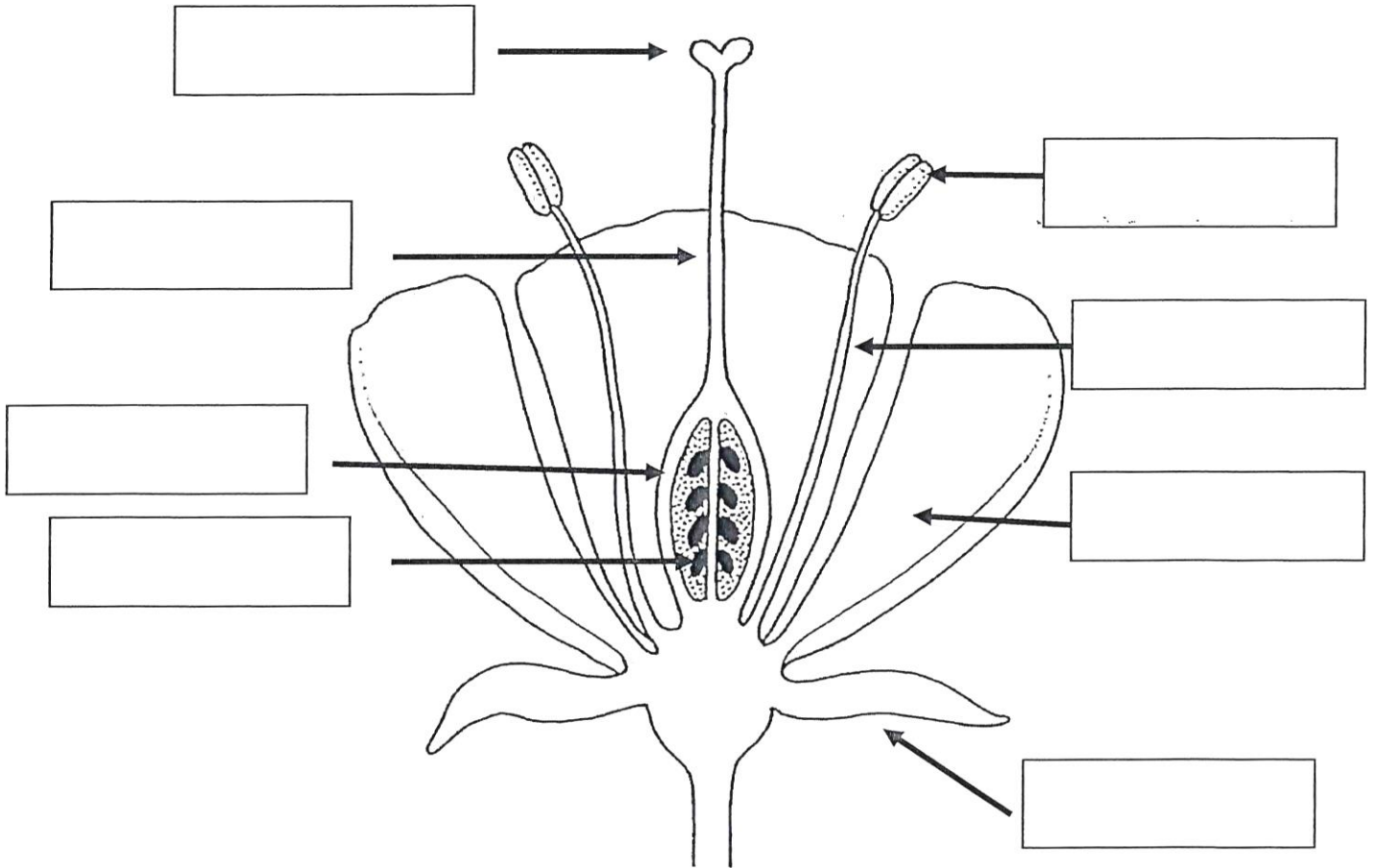
Class: Grade 4 CP (All sections)

Date: / /

Objective/s:

- To observe flower parts in the lab.
- To understand main function of each part.

Question 1: Label the following flower parts:



Accredited by



Cambridge Assessment
International Education
Cambridge International School

edexcel



معتمدة من

Question 2: Fill in the blank with the suitable answer:

- The male part of the flower is:
- The female part of the flower is:
- The male cell of the flower is:
- The female cell of the flower is:
- Are colored to attract insects:

- The part containing the ovules (eggs):
- The anther is supported by:
- The sticky part at the end of the style:
- A sugary substance that that attracts insects:
- The green part protecting the flower until it is open:
- The part that develops into the fruit:
- The part of the carpel that receives the pollen:
- The green part protecting the flower until it's open: