

The Primary Stage of Grades (4-5) School Year 2022- 2023

Name: _____ Answer key _____

Subject: Science

Unit 1: Flowering plants

Worksheet 1: Parts of flower

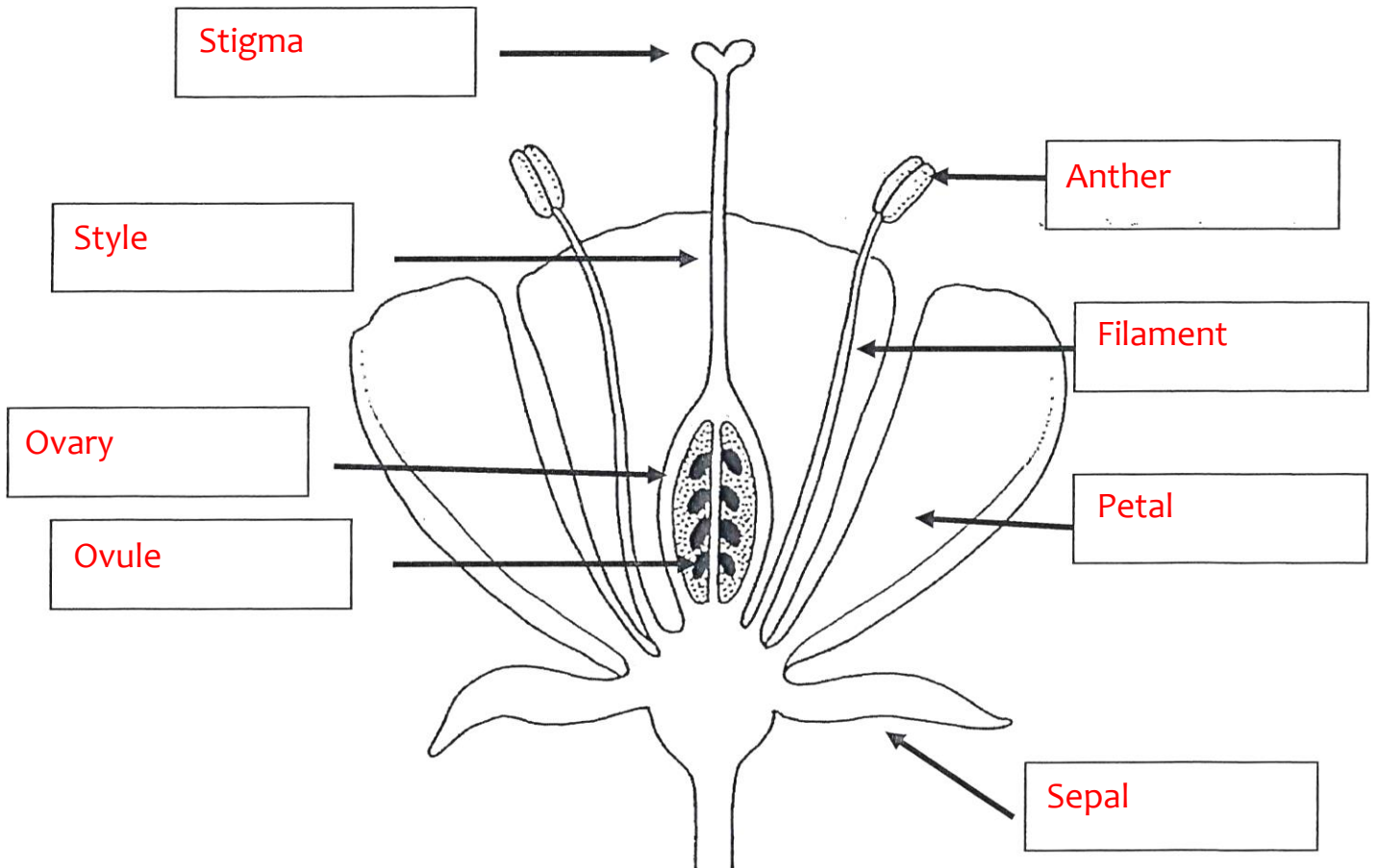
Class: Grade 4 CP (All sections)

Date: / /

Objective/s:

- To observe flower parts in the lab.
- To understand main function of each part.

Question 1: Label the following flower parts:



Question 2: Fill in the blank with the suitable answer:

- The male part of the flower is: **Stamen**
- The female part of the flower is: **Carpel**
- The male cell of the flower is: **Pollen**
- The female cell of the flower is: **Ovule**
- Are colored to attract insects: **Petals**
- The part containing the ovules (eggs): **Ovary**
- The anther is supported by: **Filament**
- The sticky part at the end of the style: **Stigma**
- A sugary substance that that attracts insects: **Nectar**
- The green part protecting the flower until it is open: **Sepal**
- The part that develops into the fruit: **Ovary**
- The part of the carpel that receives the pollen: **Stigma**
- The green part protecting the flower until it's open: **Sepal**