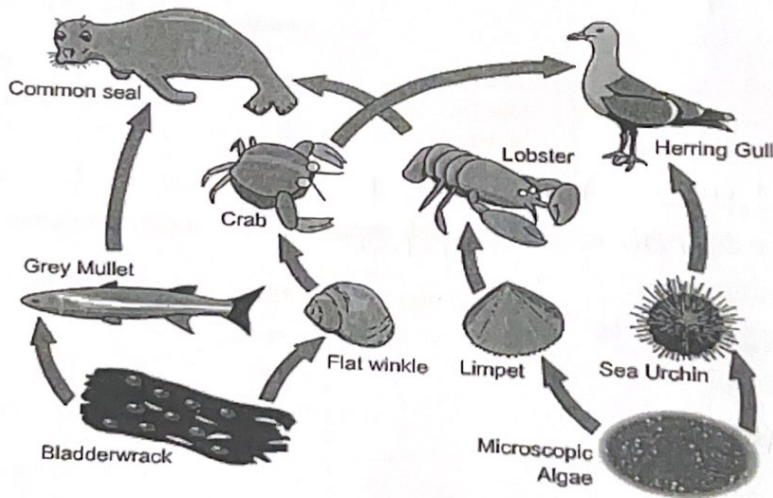


Question one :

a. Use the food web below to answer the following questions .



- Complete the food chain below from this food web :
bladderwrack → flat winkle → Crab → Herring Gull
- Write the name of a : *(write only one name)*
 - a. Herbivore Grey Mullet / Flat winkle / Limpet / Sea Urchin
 - b. Producer Bladderwrack / Algae
 - c. Secondary Consumer Common Seal / Crab / lobster / Herring Gull
 - d. An organism in the second trophic level Grey Mullet / winkle / Limpet / Urchin
 - e. A top carnivore Common Seal / Herring Gull

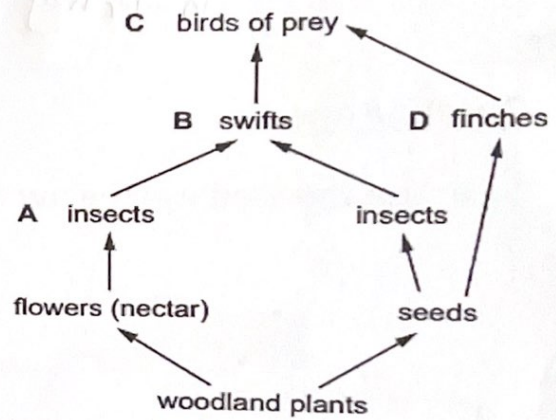
- What do the arrows in a food chain represent?

.....The flow of energy.....

- b. The diagram shows some feeding relationships in a woodland area.

Which of the labelled animals are in competition with seed-eating insects for their food?

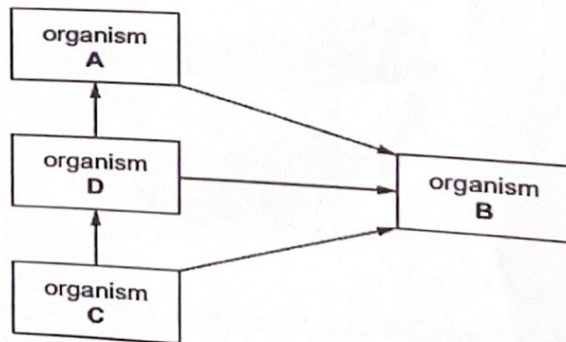
.....Finches.....



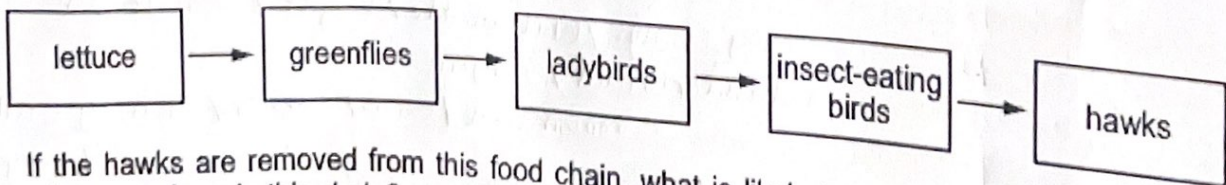
- c. The diagram shows a food web including a producer, consumers and a decomposer.

Which organism is the decomposer?

.....B.....



- d. The diagram shows a food chain.



If the hawks are removed from this food chain, what is likely to happen to the numbers of the other organisms in this chain?

Accredited by



Cambridge Assessment International Education
Cambridge International School

edexcel

CIS
COUNCIL OF INTERNATIONAL SCHOOLS



Eco-Schools

Choose the correct row from A, B, C and D.

	greenflies	ladybirds	insect-eating birds
A	decrease	increase	decrease
B	decrease	increase	increase
C	increase	decrease	decrease
D	increase	decrease	increase

Question 2 :

Fig. 6.1 shows a food chain.

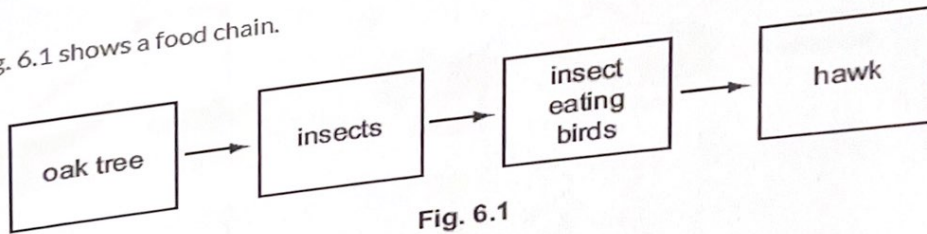


Fig. 6.1

Name a herbivore from the food chain shown in Fig. 6.1.

Insects

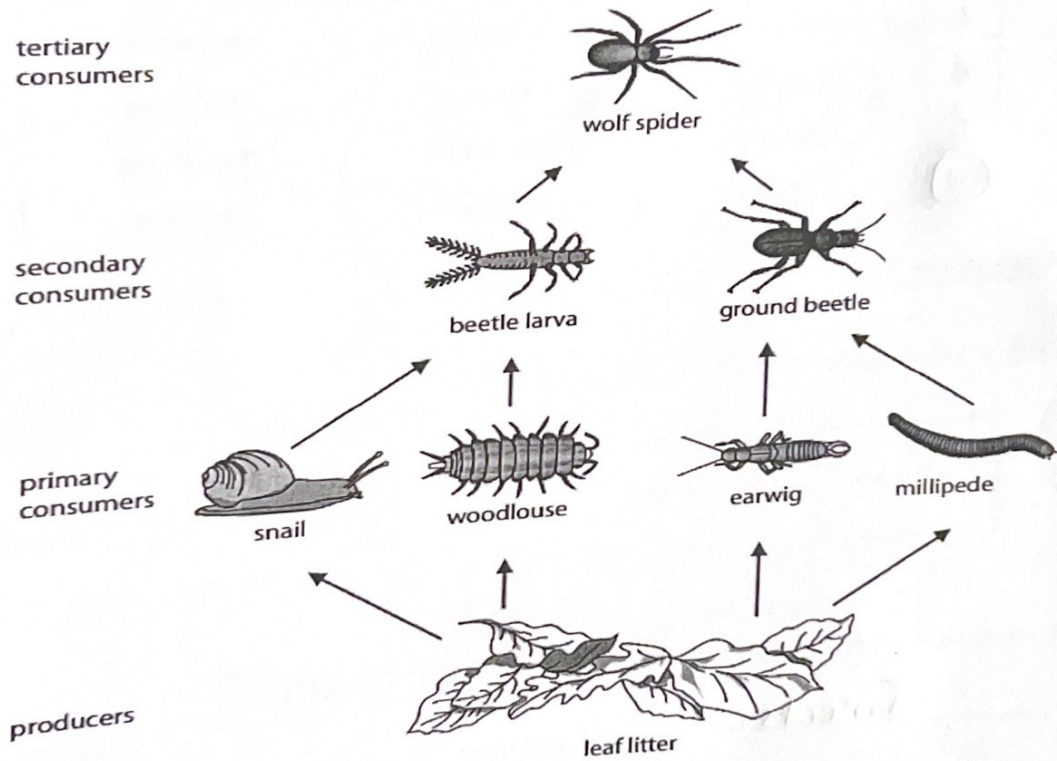
The food chain shown in Fig. 6.1 starts with an oak tree.
Name and describe the method of nutrition of the oak tree.

name autotroph

description It produces its own food by the process of photosynthesis.

Question 3 :

When trees lose leaves, they fall to the ground and form leaf litter. The leaf litter provides food for many animals. The diagram shows a food web that includes leaf litter.



(a) Use information in the food web to complete the table.
The first one has been done for you.

(4)

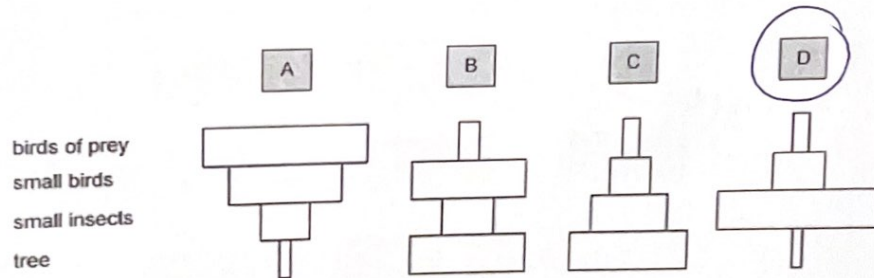
	Number
the number of different tertiary consumers	1
the number of trophic levels	4
the number of food chains	4
the number of different predators	3
the number of different consumers	7

Question 4 :

A food chain is shown below.

tree → small insects → small birds → birds of prey

One of the pyramids of number below represents this food chain.

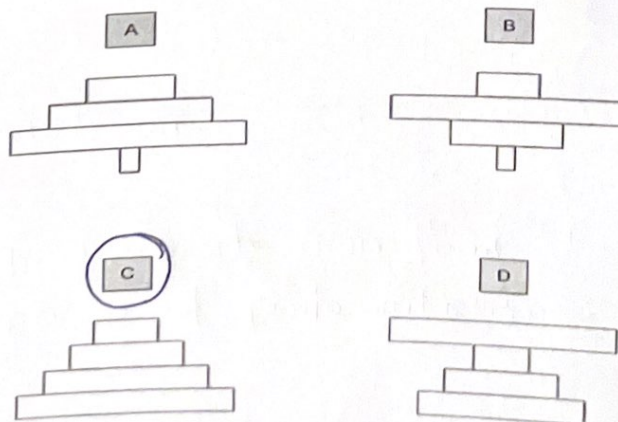


Which one would be correct?

Explain your answer ... pyramid of number shows the
number of organisms

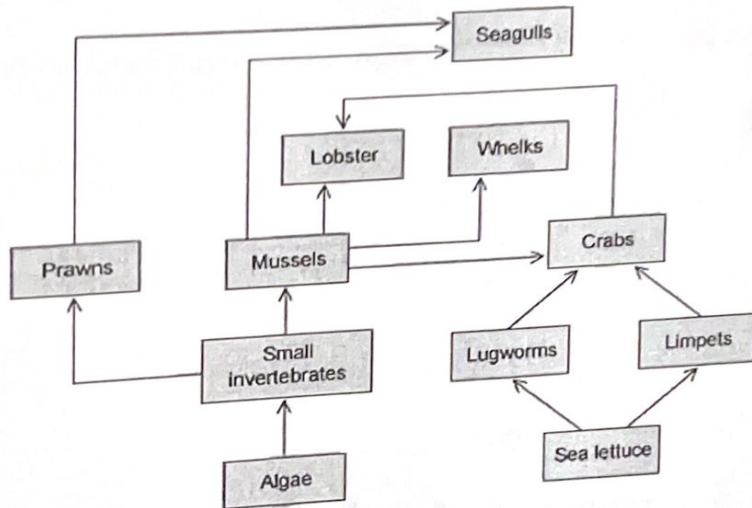
Question 5 :

Which of the following diagrams show a pyramid of biomass for a forest?



Question 6 :

The image shows a food web.



Which organism, from the food web, feeds on the greatest variety of organisms?

- A. Whelks
- B. Crabs**
- C. Limpets
- D. Mussels

Accredited by



Cambridge Assessment International Education
Cambridge International School

edexcel

CIS
Cambridge International School



Eco-Schools

مدرسة دولية