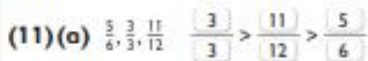
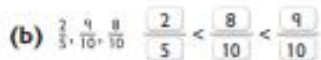
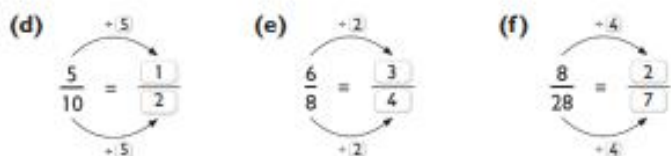
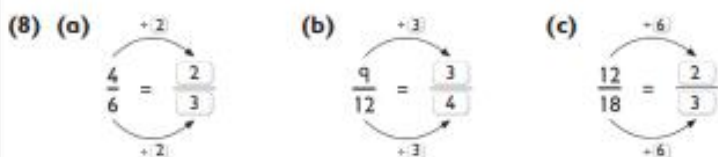
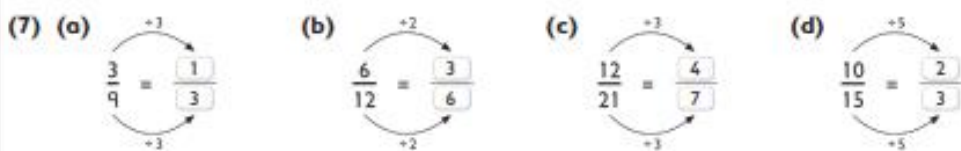
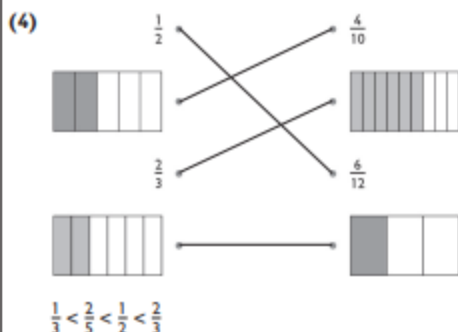


- (3) (a) $\frac{2}{4}$ (b) $\frac{6}{8}$ (c) $\frac{2}{10}$ (d) $\frac{6}{9}$ (e) $\frac{15}{25}$ (f) $\frac{28}{32}$



144

(1) (a) $1\frac{1}{2}$ (b) $1\frac{3}{4}$ (c) $2\frac{2}{3}$ (d) $1\frac{2}{5}$ (e) $6\frac{1}{2}$ (f) $3\frac{1}{3}$

(2) (a) $\frac{3}{2}$ (b) $\frac{11}{3}$ (c) $\frac{21}{8}$ (d) $\frac{21}{5}$ (e) $\frac{25}{7}$ (f) $\frac{38}{9}$

(3) (a) $1\frac{1}{2}$ (b) $1\frac{1}{4}$ (c) $2\frac{1}{2}$ (d) $1\frac{1}{2}$ (e) $2\frac{1}{4}$ (f) $2\frac{1}{3}$

145

(4) (a) $\frac{9}{2} \longrightarrow 9 \div 2 = 4 \text{ r } 1$

The mixed number = $4\frac{1}{2}$

(b) $\frac{21}{5} \longrightarrow 21 \div 5 = 4 \text{ r } 1$

The mixed number = $4\frac{1}{5}$

(c) $\frac{13}{3} \longrightarrow 13 \div 3 = 4 \text{ r } 1$

The mixed number = $4\frac{1}{3}$

P.indb 105

(d) $\frac{25}{4} \longrightarrow 25 \div 4 = 6 \text{ r } 1$

The mixed number = $6\frac{1}{4}$

(e) $\frac{31}{7} \longrightarrow 31 \div 7 = 4 \text{ r } 3$

The mixed number = $4\frac{3}{7}$

150–151	<p>(1) (a) 0.5 (b) 0.25 (c) 0.2 (d) 0.1 (e) 0.05 (f) 0.04 (g) 0.02 (h) 0.01</p> <p>(2) (a) $\frac{1}{5} + \frac{1}{5} + \frac{1}{5} = \frac{3}{5}$ (b) $\frac{1}{4} + \frac{1}{4} + \frac{1}{4} = \frac{3}{4}$ (c) $\frac{1}{5} + \frac{1}{5} + \frac{1}{5} + \frac{1}{5} = \frac{4}{5}$ (d) $\frac{1}{100} + \frac{1}{100} + \frac{1}{100} + \frac{1}{100} = \frac{4}{100}$ (e) $\frac{1}{100} + \frac{1}{100} = \frac{2}{100}$ (f) $\frac{1}{100} + \frac{1}{100} + \frac{1}{100} = \frac{3}{100}$</p> <p>(3) (a) 0.75 (b) 0.7 (c) 0.4 (d) 0.17 (e) 0.15 (f) 0.8 (g) 0.99 (h) 0.3</p> <p>(4) (a) 2.75 (b) 3.3 (c) 5.6 (d) 6.11 (e) 14.7 (f) 1.99</p>
---------	--

Page	Answers
154	(1) (a) $\frac{3}{100} = 0.03$ (b) $\frac{20}{100} = 0.20$ (c) $\frac{10}{100} = 0.10$ (d) $\frac{7}{100} = 0.07$

Page	Answers
164	<p>(1) (a) What percentage of the grid is light green? (b) What percentage of the grid is dark green?</p> <p>$\frac{12}{100} = 12\%$ $\frac{1}{100} = 1\%$</p> <p>(c) What percentage of the grid is grey?</p> <p>$\frac{31}{100} = 31\%$</p>

166

(3) (a) What percentage of the rectangle is grey?

$$\frac{3}{10} = \frac{30}{100} = 30\%$$

(b) What percentage of the rectangle is light green?

$$\frac{4}{10} = \frac{40}{100} = 40\%$$

(c) What percentage of the rectangle is dark green?

$$\frac{1}{10} = \frac{10}{100} = 10\%$$

(d) What percentage of the rectangle is white?

$$\frac{2}{10} = \frac{20}{100} = 20\%$$

167

(4) (a) What percentage of the grid is dark green?

$$\frac{6}{25} = \frac{24}{100} = 24\%$$

(b) What percentage of the grid is grey?

$$\frac{1}{25} = \frac{4}{100} = 4\%$$

(c) What percentage of the grid is light green?

$$\frac{4}{25} = \frac{16}{100} = 16\%$$

(7) (a) How many bricks are in the shape of a hexagon?

Recall that $40\% = \frac{40}{100}$

$$\text{So, } 40\% \text{ of } 180 = \frac{40}{100} \times 180 \\ = 72$$

So, 72 bricks are in the shape of a hexagon.

(b) How many bricks are in the shape of a rectangle?

$$180 - 72 = 108$$

So, 108 bricks are in the shape of a rectangle.

(8) (a) How much is the discount?

Recall that $25\% = \frac{25}{100} = \frac{1}{4}$

$$\text{So, } 25\% \text{ of } \$24 = \frac{1}{4} \times 24 \\ = 6$$

So, the discount is \$6.

(b) What is the discounted price of the football?

$$24 - 6 = 18$$

So, the discounted price of the football is \$18.

(9) (a) 32% of 50 = **16**

$$\begin{aligned}\frac{32}{100} \times 50 &= \frac{32 \times 50}{100} \\ &= \frac{1600}{100} \\ &= 16\end{aligned}$$

(b) 40% of 45 = **18**

$$\begin{aligned}\frac{40}{100} \times 45 &= \frac{40 \times 45}{100} \\ &= \frac{1800}{100} \\ &= 18\end{aligned}$$

(c) 75% of 60 = **45**

$$\begin{aligned}\frac{75}{100} \times 60 &= \frac{75 \times 60}{100} \\ &= \frac{4500}{100} \\ &= 45\end{aligned}$$

(d) 42% of 150 = **63**

$$\begin{aligned}\frac{42}{100} \times 150 &= \frac{42 \times 150}{100} \\ &= \frac{6300}{100} \\ &= 63\end{aligned}$$

(e) 16% of 125 = **20**

$$\begin{aligned}\frac{16}{100} \times 125 &= \frac{16 \times 125}{100} \\ &= \frac{2000}{100} \\ &= 20\end{aligned}$$

(f) 35 % of 80 = **28**

$$\begin{aligned}\frac{35}{100} \times 80 &= \frac{35 \times 80}{100} \\ &= \frac{2800}{100} \\ &= 28\end{aligned}$$

(g) 92 % of 225 = **207**

$$\begin{aligned}\frac{92}{100} \times 225 &= \frac{92 \times 225}{100} \\ &= \frac{20700}{100} \\ &= 207\end{aligned}$$

(h) 28 % of 200 = **56**

$$\begin{aligned}\frac{28}{100} \times 200 &= \frac{28 \times 200}{100} \\ &= \frac{5600}{100} \\ &= 56\end{aligned}$$