



The National Orthodox School / Shmaisani

Subject: Biology

Worksheet : Heart

Name:

Answer key

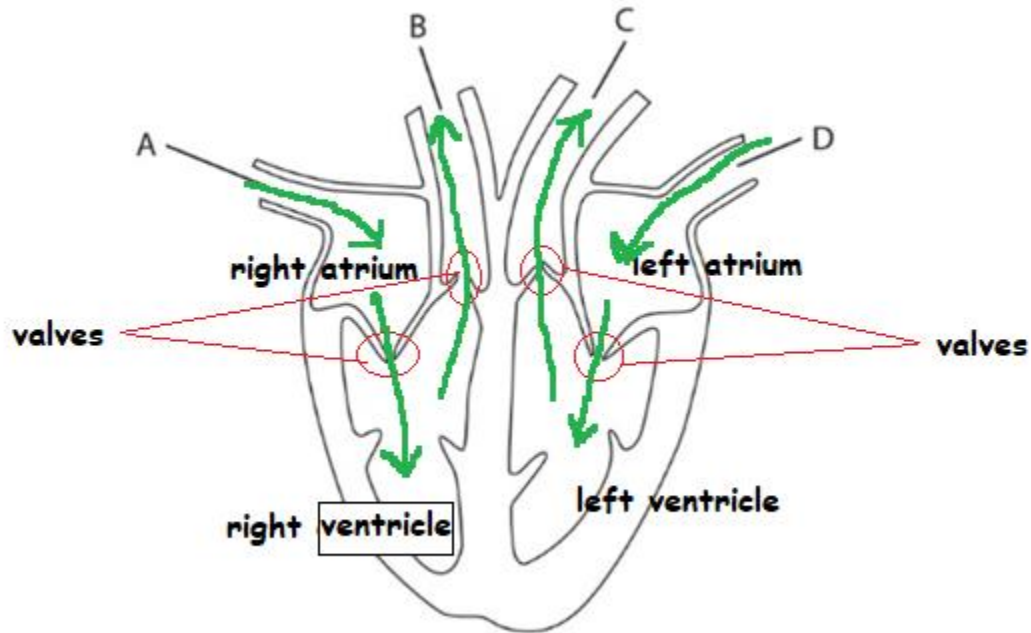
Date:

Grade 7 all sections

Objective : Be able to answer questions about the heart structure and the 2 circuits .

Question 1 :

The diagram shows the human heart with four blood vessels labelled A,B,C and D.



- Name blood vessels :

A : vena cava

B : pulmonary artery

C : aorta

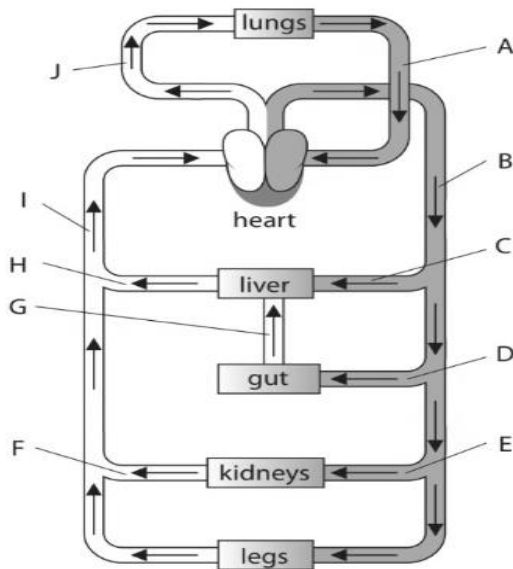
D : pulmonary vein



- Which blood vessel carries oxygen rich blood to the heartD.....
- Which blood vessel contains blood at highest pressureC.....
- Which blood vessel carries oxygen poor blood back to the heart from the bodyA.....
- Which blood vessel carries oxygen poor blood from the heart to the lungs ...B.....
- On the diagram
 - label the valves .
 - Draw arrows to show the direction of blood flow .
 - Label the 4 chambers .

Question 2 :

The diagram shows the human circulation system with some blood vessels labelled A to J. The arrows show the direction of blood flow.



1. Complete the table by giving the letter of the blood vessel that matches each statement.

Statement	Letter
Contains the least carbon dioxide	A
Contains the most glucose after a meal	G
Contains the least oxygen	J
Contains the least urea	F
Contains blood at the highest pressure	B

2. State two ways in which the structure of blood vessel A differs from the structure of blood vessel J.

A : vein / 1. Thin walls 2. Have valves

J : artery / 1. Thick walls 2. No valves

Describe how the blood in B differs than the blood in I .

B : oxygen rich blood

I : oxygen poor blood

Accredited by



Cambridge Assessment
International Education
Cambridge International School

edexcel

CIS
COUNCIL OF
INTERNATIONAL
SCHOOLS



Eco-Schools

معتمدة من