

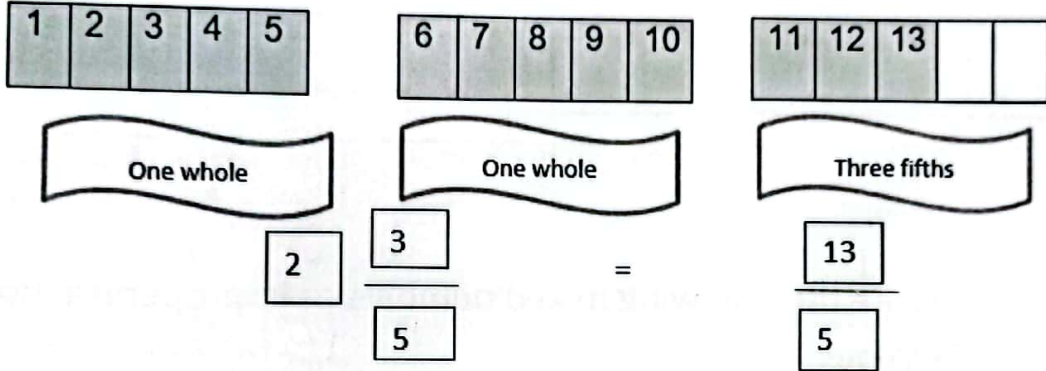
**The Primary Stage of Grades (4-5)**  
**School Year 2022- 2023**  
**Second semester**

Name: Key  
 Date: / 2/2022

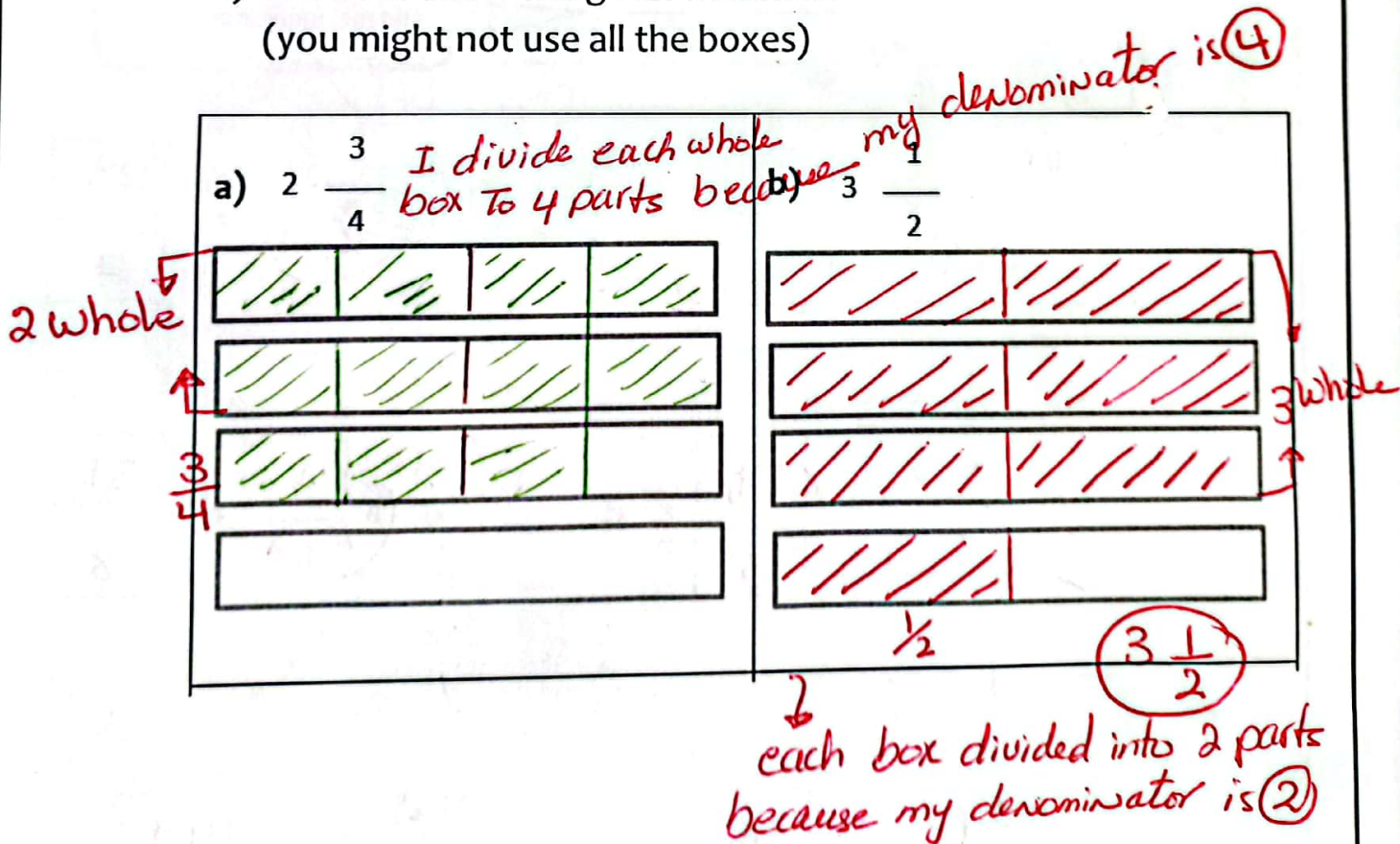
Activity 2

Subject: Math  
 Class: Grade 4CP (C, D, E, F & G)

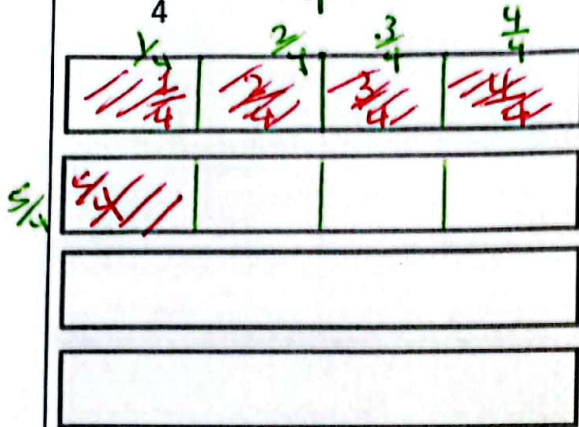
**Objectives:** Write mixed numbers as improper fractions.  
 Write improper fractions as mixed numbers.



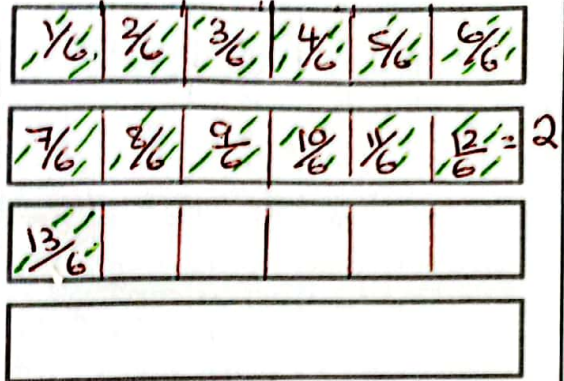
1) Shade to show the given fractions:  
 (you might not use all the boxes)



$$c) \frac{5}{4} = 1 \frac{1}{4}$$



$$d) \frac{13}{6} = 2 \frac{1}{6}$$



2) Write the following mixed numbers as improper fractions.

Example:

$$\boxed{12} \times \frac{2}{4} = \boxed{12+2 = 14}$$

$$\frac{14}{4}$$

Multiply denominator by the whole number. Then add the numerator

$$a) \frac{10 + 2}{5} = \frac{12}{5}$$

$$b) \frac{21 + 2}{3} = \frac{23}{3}$$

$$c) \frac{15 + 2}{5} = \frac{17}{5}$$

$$d) \frac{48 + 3}{6} = \frac{51}{6}$$

$$e) \frac{27 + 1}{9} = \frac{28}{9}$$

$$f) \frac{42 + 5}{6} = \frac{47}{6}$$

$$g) \frac{24 + 2}{8 \times 3} = \frac{26}{3}$$

$$h) \frac{28 + 3}{4 \times 7} = \frac{31}{7}$$

3) Write the following improper fractions as mixed numbers.  
Example:

$$\frac{17}{4} = 4 \frac{1}{4}$$

what times 4 close to 17  
answer is 4 (because  $4 \times 4 = 16$ )  
Then subtract 16 from 17 you'll  
get 1

$$a) \frac{27}{4} = 6 \frac{3}{4}$$

$$b) \frac{35}{5} = 7 \frac{4}{5}$$

$$c) \frac{28}{6} = 4 \frac{4}{6} = 4 \frac{2}{3} \text{ Simplest form}$$

$$d) \frac{60}{9} = 6 \frac{6}{9} \div 3 = 6 \frac{2}{3} \text{ Simplest}$$

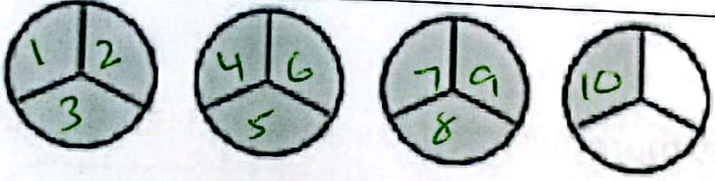
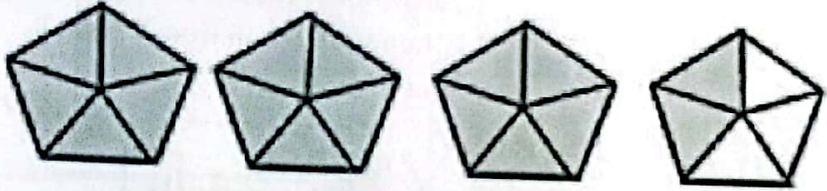
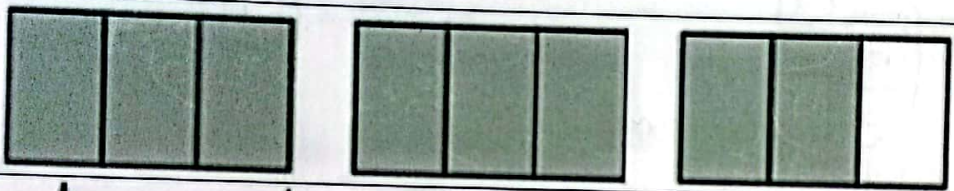
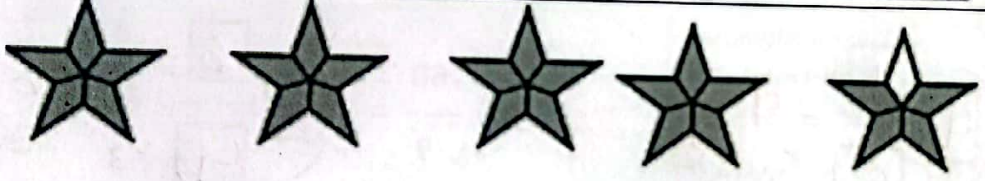

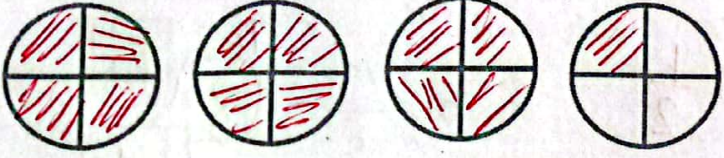
$$e) \frac{52}{8} = 6 \frac{4}{8} \div 2 = 6 \frac{2}{4} \div 2 = 6 \frac{1}{2} \text{ simplest}$$

$$f) \frac{48}{7} = 6 \frac{6}{7}$$

$$g) \frac{68}{8} = 8 \frac{4}{8} = 8 \frac{1}{2}$$

$$h) \frac{74}{9} = 8 \frac{2}{9}$$

4) Write the mixed number and the improper fraction that represents the following shaded shapes.

	Shape	Mixed Number	Improper Fraction
1		$3\frac{1}{3}$	$\frac{10}{3}$
2		$3\frac{2}{5}$	$\frac{17}{5}$
3		$2\frac{2}{3}$	$\frac{8}{3}$
4		$4\frac{4}{5}$	$\frac{24}{5}$
5	<p>Shade to show the mixed number</p> 	$2\frac{5}{6}$	$\frac{17}{6}$
6	<p>Shade to show the improper fraction</p> 	$3\frac{1}{4}$	$\frac{13}{4}$

I CAN DO IT