



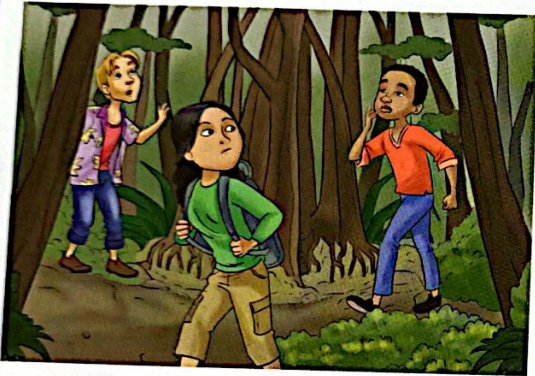
Writing a scene from a play

Write a short scene for a play. Give the scene an interesting situation, a setting, fascinating characters and stage directions.

Planning your scene

Use the following template to help you. Share ideas with others in your class and practise what your characters might say and how they might say it.

Situation where the characters find themselves - and what is happening to them

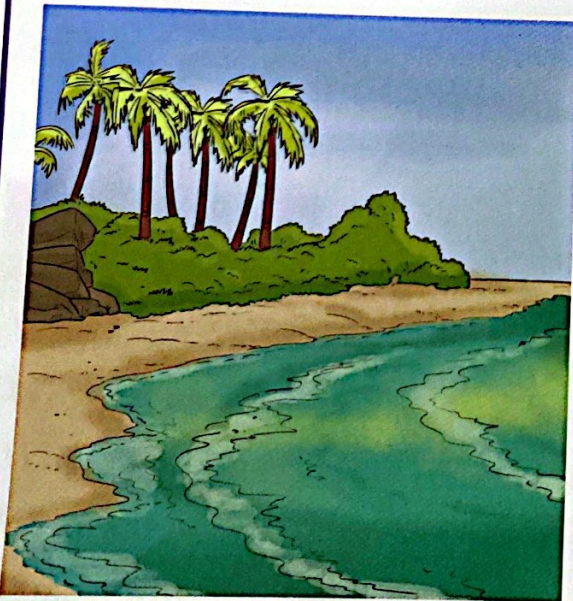


Characters who think and speak differently



Title

Setting



Ending



Further guidance to writing a scene

Situations

Examples:

- three people stuck in a lift
- panic before leaving for a holiday
- walking into the wrong house by mistake
- trying to make yourself understood in a foreign country
- thinking mistakenly you have won a great deal of money.



Characters

How will you make your characters different? These people and their relationships will make your play's storyline. Would it help to make one of your characters funny and the others more serious?

Stage directions

Use stage directions to describe the way your characters speak and what they do. When do they go offstage or when do they enter?

Setting it out

Playscripts are written out in a special way. Look back at pages 92 and 97 to check how this is done.

Language

What will your characters say to make the storyline? Try improvising so that the words sound more natural, like in real speech. What happens if one character speaks politely while another speaks quite roughly?

How long?

The extract on page 92 is approximately 350 words in length. Aim to write about 300 words in your scene.

Performing your play

A play is a performance. Make sure that your play is entertaining to anyone watching it. Try also to write lines that are easy to remember for your actors.

Write your play using the guidance provided. Perform this in a group.