

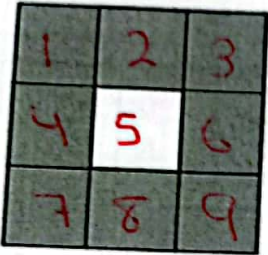
Name: Key
 Date: 7/2/2023

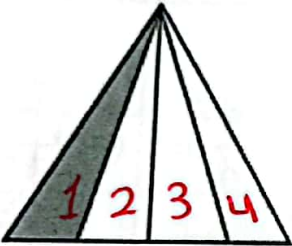
Subject: Math
 Class: 4 CP (C, D, E, F & G)

Activity (1)





Objectives: Recognize simple fractions.
 Find equivalent fractions.

1) Represent the following shaded parts as a fraction. Labeling the numerator and the denominator.

a)  $\frac{8}{9}$
 → numerator / part
 → denominator / part

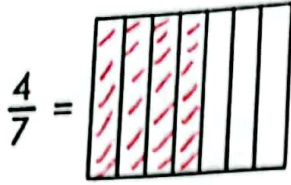
b)  $\frac{1}{4}$
 → numerator / part
 → denominator / whole

2) Use the numbers to tell you how many circles to draw and how many to shade. Then write the fraction for the shaded parts.

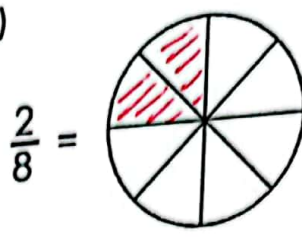
<p>a) Draw 6 circles. Shade 2 circles.</p>  $\frac{2}{6}$	<p>b) Draw 7 circles. Shade 3 circles.</p>  $\frac{3}{7}$
<p>c) Draw 4 circles. Shade 4 circles.</p>  $\frac{4}{4}$ <u>1 whole</u>	<p>d) Draw 5 circles. Shade 4 circles.</p>  $\frac{4}{5}$

3) Color the shape to show the fraction, and write the equivalent fractions below.

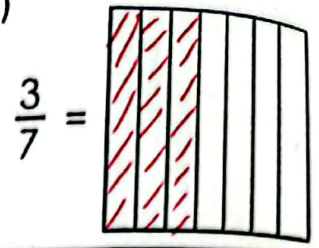
a)



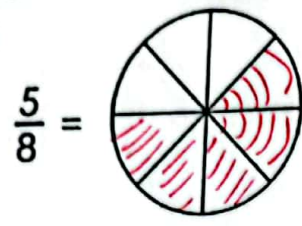
b)



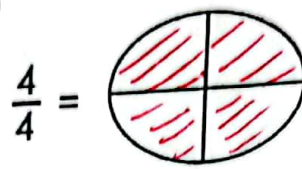
c)



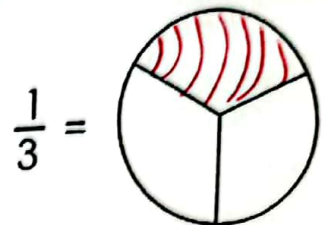
d)



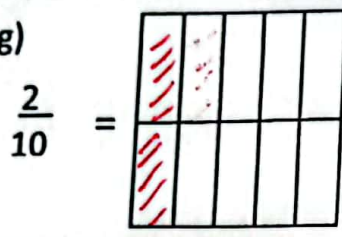
e)



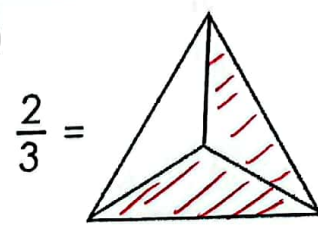
f)



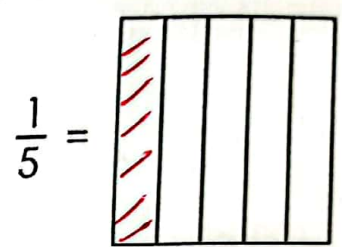
g)



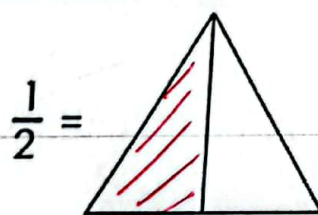
h)



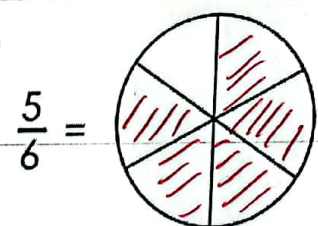
i)



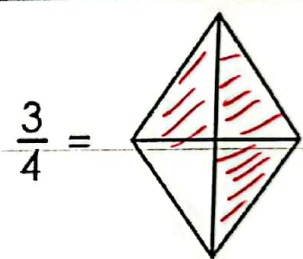
j)



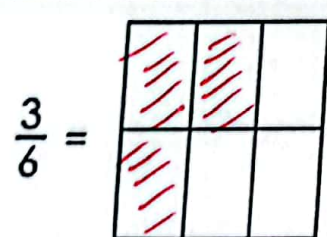
k)



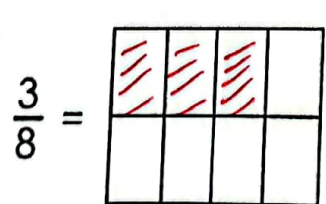
l)



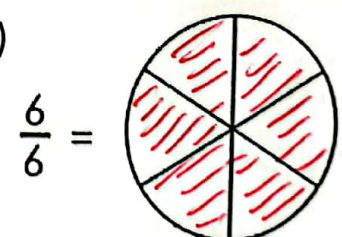
m)



n)



o)

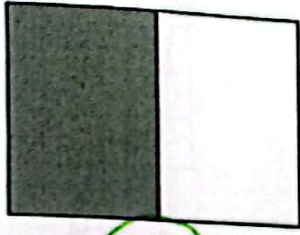


Fractions equivalent to ONE whole are: $\frac{6}{6} = \frac{4}{4} = 1 \text{ whole}$

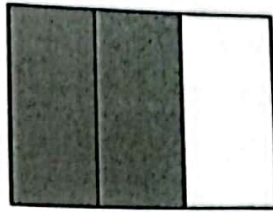
Fractions equivalent to one half are: $\frac{1 \times 2}{2 \times 2} = \frac{2}{4}$

Fractions equivalent to one fifth are: $\frac{1 \times 2}{5 \times 2} = \frac{2}{10}$

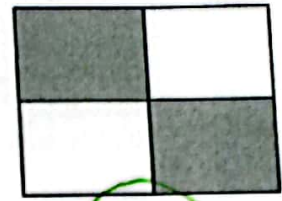
4) Look at the shaded areas of the pictures below, then circle the ones that are equal in each row.



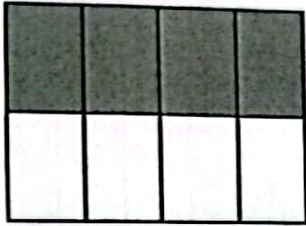
$$\frac{1}{2}$$



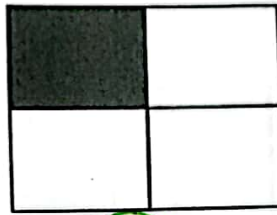
$$\frac{2}{3}$$



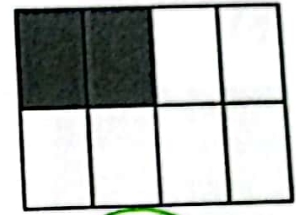
$$\frac{2}{4}$$



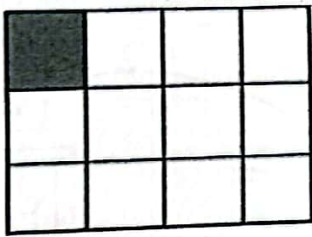
$$\frac{4}{8}$$



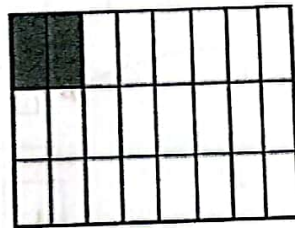
$$\frac{1}{4}$$



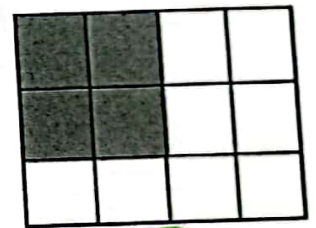
$$\frac{2}{8}$$



$$\frac{1}{12}$$



$$\frac{2}{24}$$



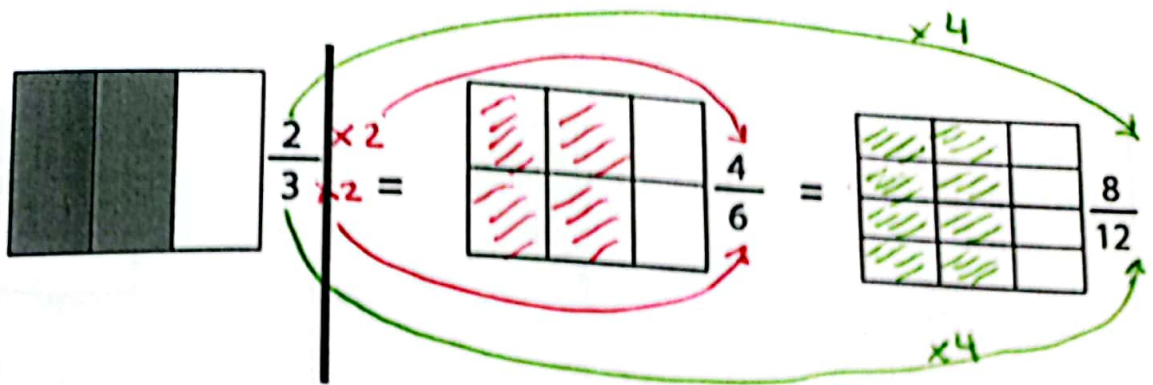
$$\frac{4}{12}$$

Can you find other fractions that are equivalent to one half?

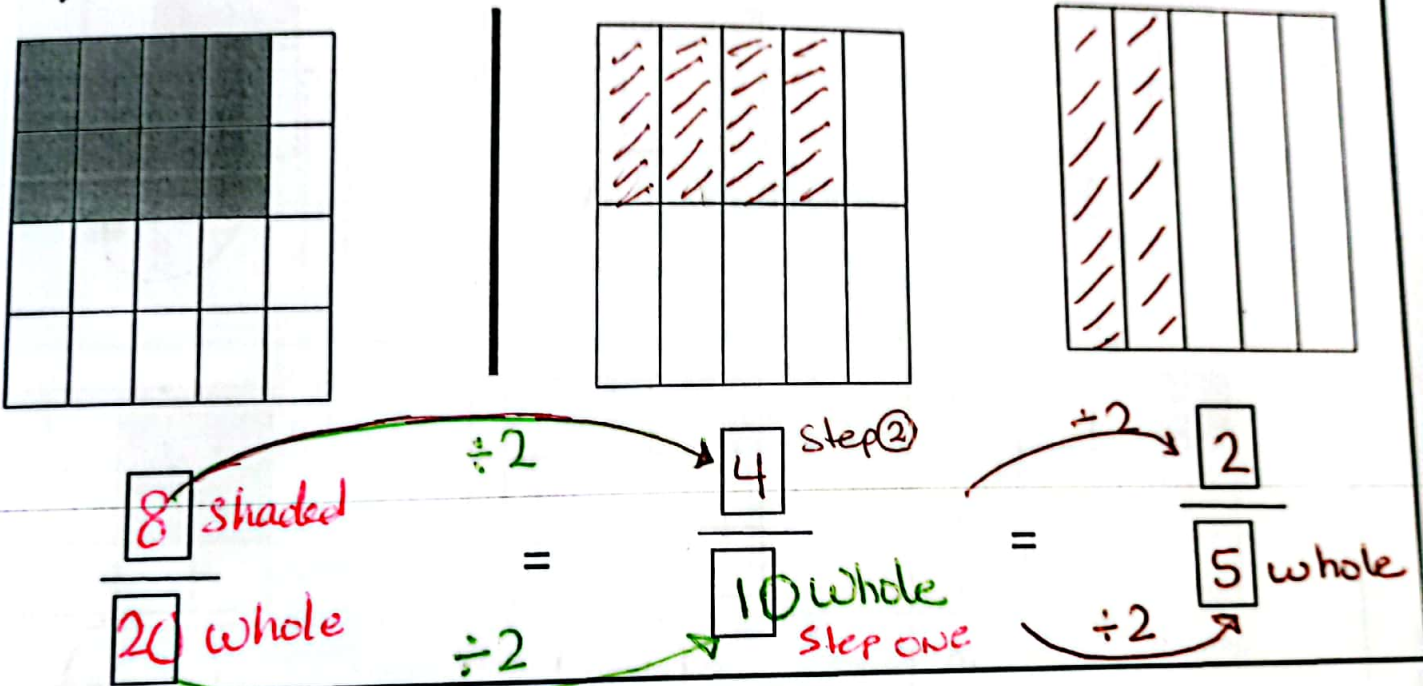
$$\frac{1}{2} = \frac{2}{4} = \frac{4}{8}$$

5) Look at the fractions below. Color the boxes so that both sides are equal.

a)



b)



c)

