



Name: _____

Subject: science revision sheet

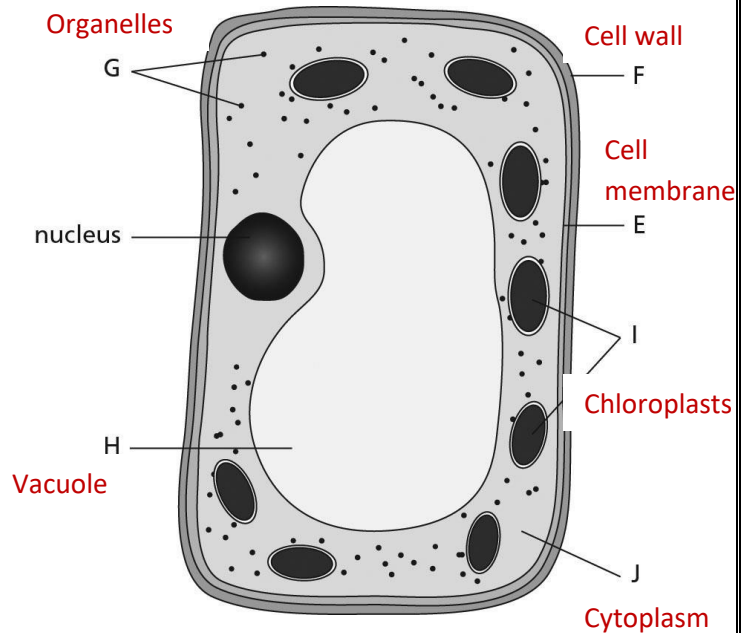
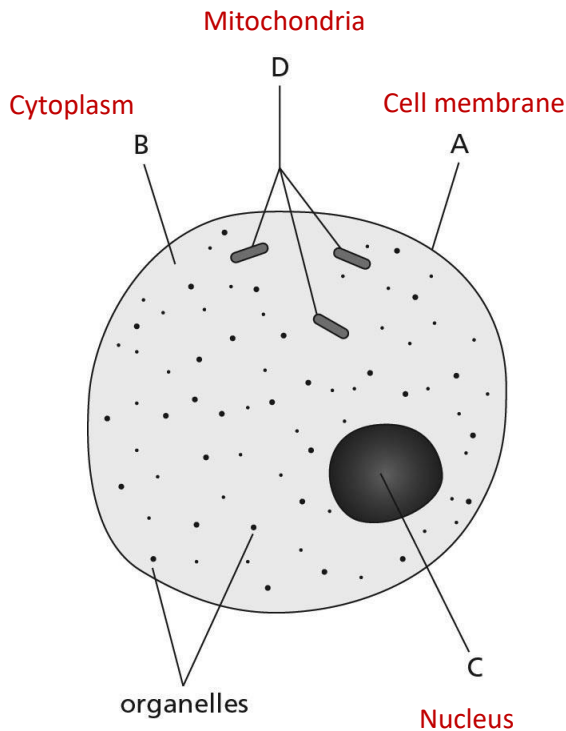
Date: / /

Class: 6 A

Question 1:

Name the parts of the animal and plant cells shown. Choose from the words given, you can choose the words more than once.

**cell membrane , cell wall, cytoplasm , mitochondria ,
nucleus , vacuole, chloroplasts , organelles**



Question 2:

Using your knowledge of animal and plant cells, answer the following questions.

a) What is the function of the cell wall in the plant cell?

_____ It gives an extra protective layer outside the cell/ It gives the cell shape and strength _____.

b) Fill in the blanks with the correct word to complete the sentences.

This structure is responsible to provides internal pressure for the cell:

_____ Vacuole _____.

It is the simplest type of cells: ___ Animal cell _____.

This structure contains the green pigment (chlorophyll):

_____ Chloroplasts _____.

This structure contains DNA: _____ Nucleus _____.

The mitochondria is responsible to produce: ___ Energy _____.

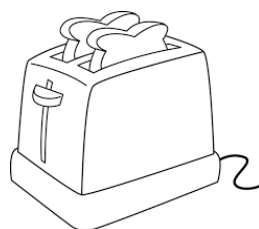
This structure is a jelly-like material: ___ Cytoplasm _____.

Question 3 :

Write the useful type of energy produced from the following devices.



Sound energy



Thermal energy



Kinetic energy

Question 4:

Fill in the blanks with the correct form of energy.

- The useful types of energy produced from the TV are sound and light energy.
- The useful energy produced from the electrical drill is kinetic energy.
- Elastic energy is a form of potential energy.

Question 5:

a) Name the types of energy mentioned in this sentence in the right order:

A monkey **walked** in the forest, **climbed** up a tree, and **ate a banana**.

kinetic energy / gravitational energy / chemical energy.

b) The picture shows three children playing on monkey bars. They have the same mass.

1- Which child has the **least** gravitational potential energy?

Laith.

2- Which child has the **most** gravitational potential energy?

Sanad.

