



Name: \_\_\_\_\_

Subject: science revision sheet

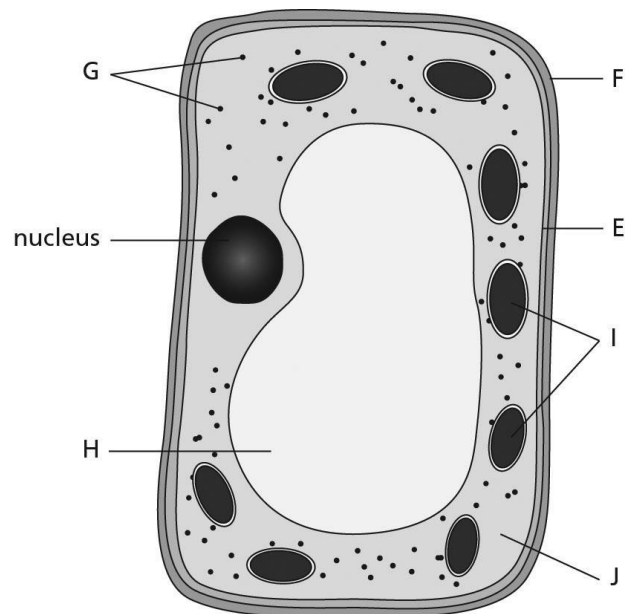
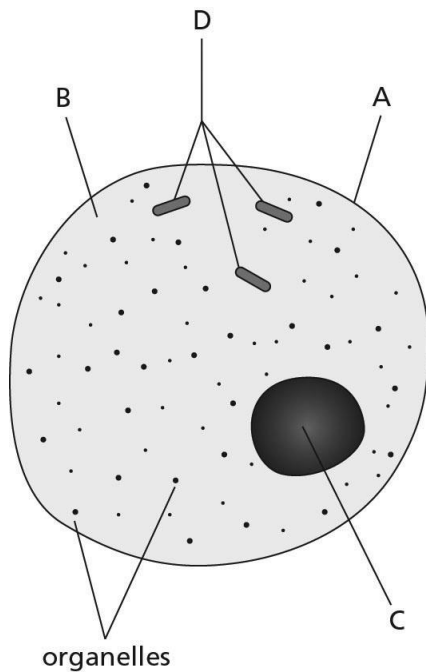
Date: / /

Class: 6 A

**Question 1:**

Name the parts of the animal and plant cells shown. Choose from the words given, you can choose the words more than once.

**cell membrane , cell wall, cytoplasm , mitochondria ,  
nucleus , vacuole, chloroplasts , organelles**



**Question 2:**

Using your knowledge of animal and plant cells, answer the following questions.

**a) What is the function of the cell wall in the plant cell?**

\_\_\_\_\_.

**b) Fill in the blanks with the correct word to complete the sentences.**

This structure is responsible to provides internal pressure for the cell:

\_\_\_\_\_.

It is the simplest type of cells: \_\_\_\_\_.

This structure contains the green pigment (chlorophyll):

\_\_\_\_\_.

This structure contains DNA: \_\_\_\_\_.

The mitochondria is responsible to produce: \_\_\_\_\_.

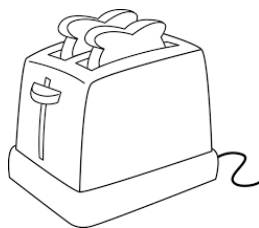
This structure is a jelly-like material: \_\_\_\_\_.

**Question 3 :**

**Write the useful type of energy produced from the following devices.**



\_\_\_\_\_



\_\_\_\_\_



\_\_\_\_\_

**Question 4:**

**Fill in the blanks with the correct form of energy.**

- The useful types of energy produced from the TV are \_\_\_\_\_ and \_\_\_\_\_ energy.
- The useful energy produced from the electrical drill is \_\_\_\_\_.
- Elastic energy is a form of \_\_\_\_\_ energy .

**Question 5:**

a) Name the types of energy mentioned in this sentence in the right order:

A monkey **walked** in the forest, **climbed** up a tree, **and ate a banana**.

\_\_\_\_\_.

b) The picture shows three children playing on monkey bars. They have the same mass.

1- Which child has the **least** gravitational potential energy?

\_\_\_\_\_.

2- Which child has the **most** gravitational potential energy?

\_\_\_\_\_.

