



The National
Orthodox School
Shmaisani



The National Orthodox School /Shmaisani

Subject: Science/ Biology

Name:

Study Sheet: Pollination ([book pages 166, 167](#))

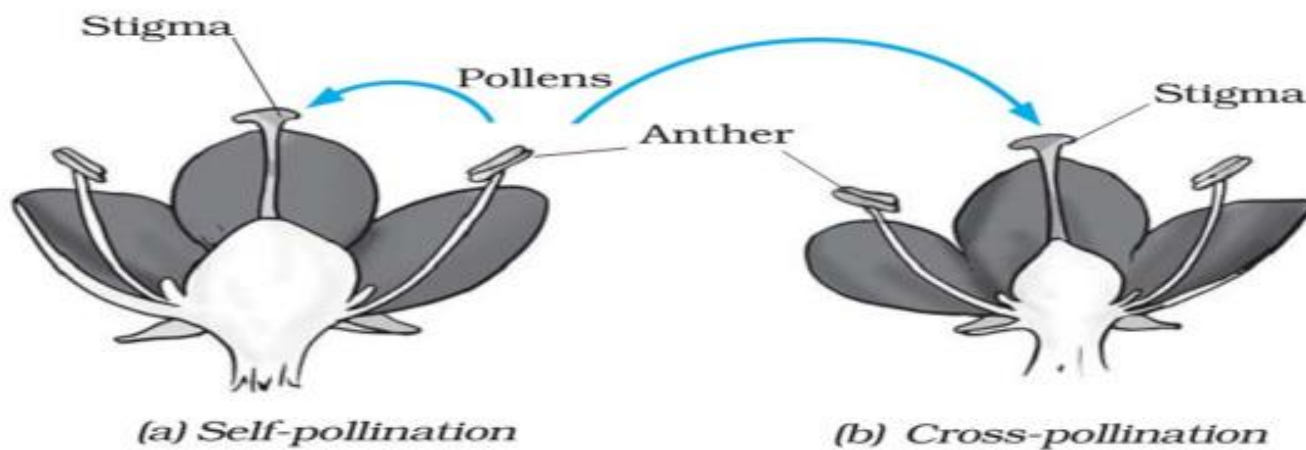
Date:

Grade-Section: 8 CS

Objective : - Compare between self - pollination and cross - pollination .

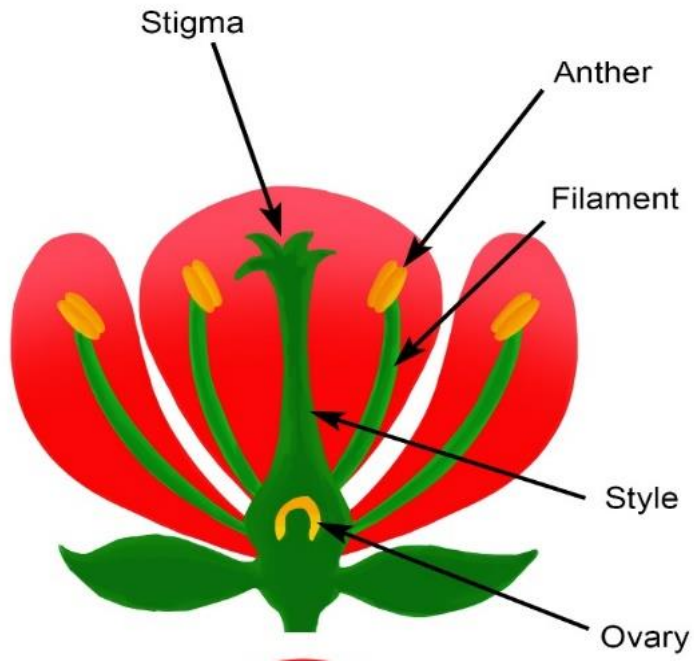
- Compare between wind pollinated flowers and insect pollinated flowers

Self pollination and cross pollination

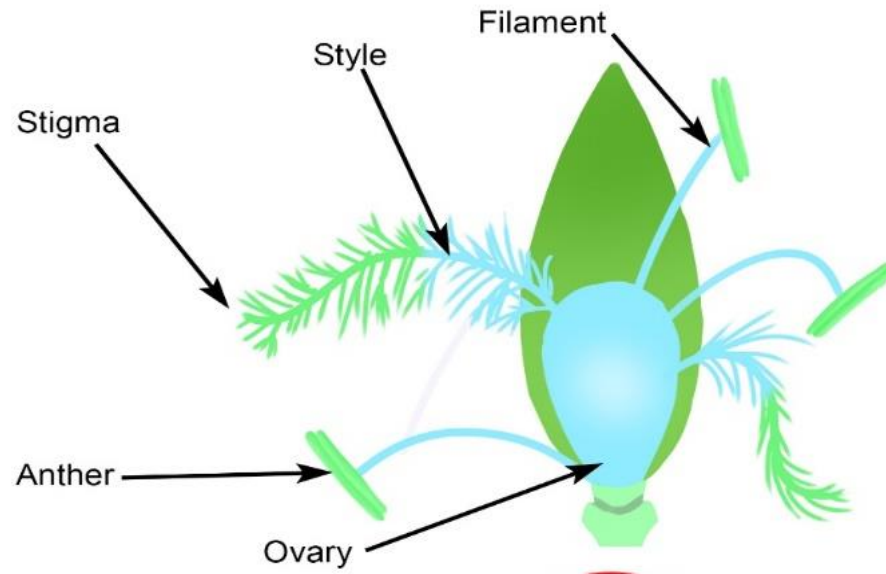


Self pollination	Cross pollination
It is the transfer of pollen grains from anther to stigma of the <u>same flower</u> or <u>another flower born on the same plant</u>	It is the transfer of pollen grains from the anther of one flower to the stigma of <u>another flower</u> <u>the born on a different plant of the same species.</u>
It does not require any external agency	An external agency (wind , water , insects) is always required
It can occur even when the flower is closed	It only occurs when the flower is open
Does not introduce any variations	Introduce variations

Insect pollinated flowers and wind pollinated flowers



INSECT POLLINATED FLOWER



WIND POLLINATED FLOWER

Insect pollination	Wind pollination
Have a scent	No scent
Sticky, spiky pollen	Large amounts of light pollen
Sticky stigma inside flower	Feathery stigmas hang outside the flower
Stamens surrounded by petals	Large stamens hang outside flower
Produce nectar	Don't produce nectar
Petals large & bright	Petals small & dull