



The National
Orthodox School
Shmaisani

The National Orthodox School /Shmaisani

Subject: Science/ Biology

Name:

Study Sheet: Pollination ([book pages 166, 167](#))

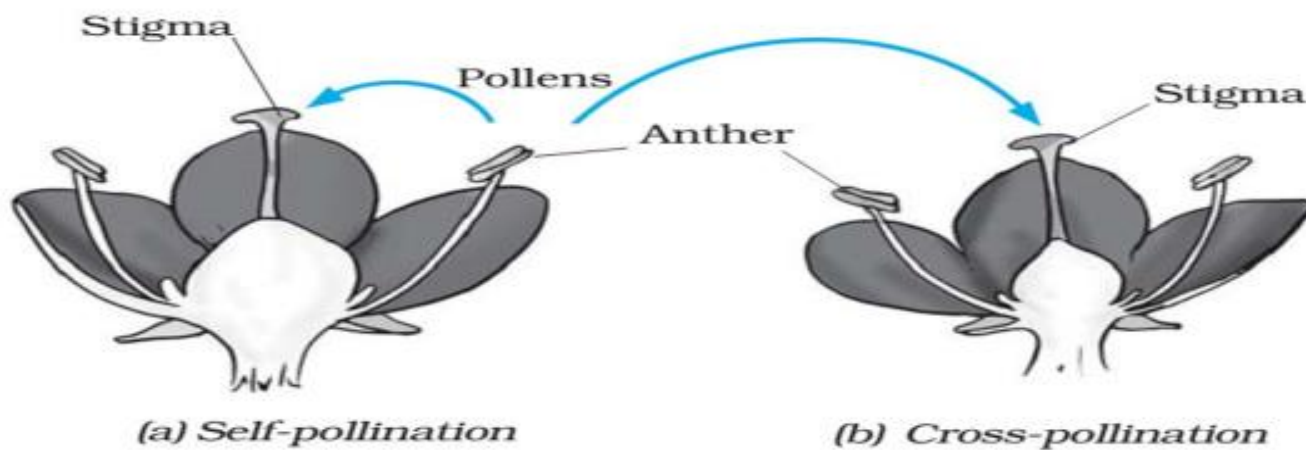
Date:

Grade-Section: 8 CS

Objective : - Compare between self - pollination and cross - pollination .

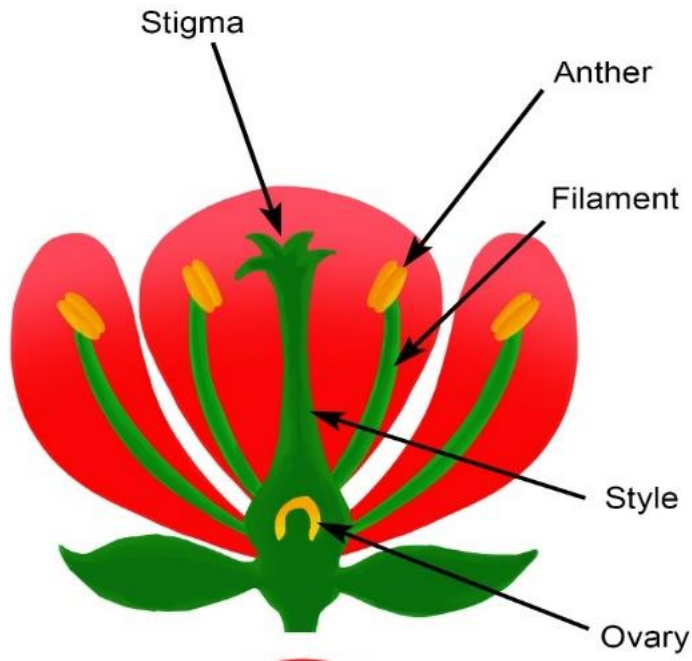
- Compare between wind pollinated flowers and insect pollinated flowers

Self pollination and cross pollination

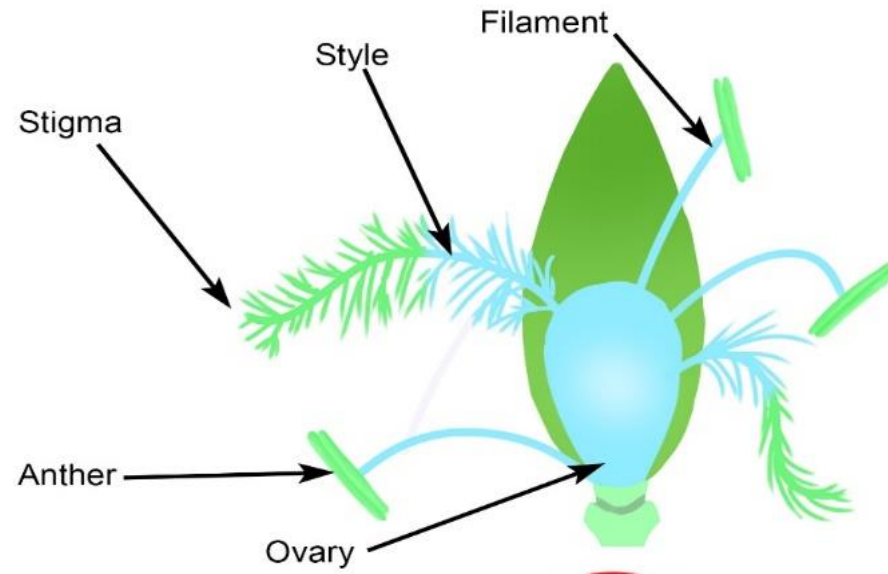


| Self pollination | Cross pollination |
|--|---|
| It is the transfer of pollen grains from anther to stigma of the <u>same flower</u> or <u>another flower born on the same plant</u> | It is the transfer of pollen grains from the anther of one flower to the stigma of <u>another flower</u> <u>the born on a different plant of the same species.</u> |
| It does not require any external agency | An external agency (wind , water , insects) is always required |
| It can occur even when the flower is closed | It only occurs when the flower is open |
| Does not introduce any variations | Introduce variations |

Insect pollinated flowers and wind pollinated flowers



INSECT POLLINATED FLOWER



WIND POLLINATED FLOWER

| Insect pollination | Wind pollination |
|------------------------------|--|
| Have a scent | No scent |
| Sticky, spiky pollen | Large amounts of light pollen |
| Sticky stigma inside flower | Feathery stigmas hang outside the flower |
| Stamens surrounded by petals | Large stamens hang outside flower |
| Produce nectar | Don't produce nectar |
| Petals large & bright | Petals small & dull |