



The National Orthodox School /Shmaisani

Subject: Science

Name:

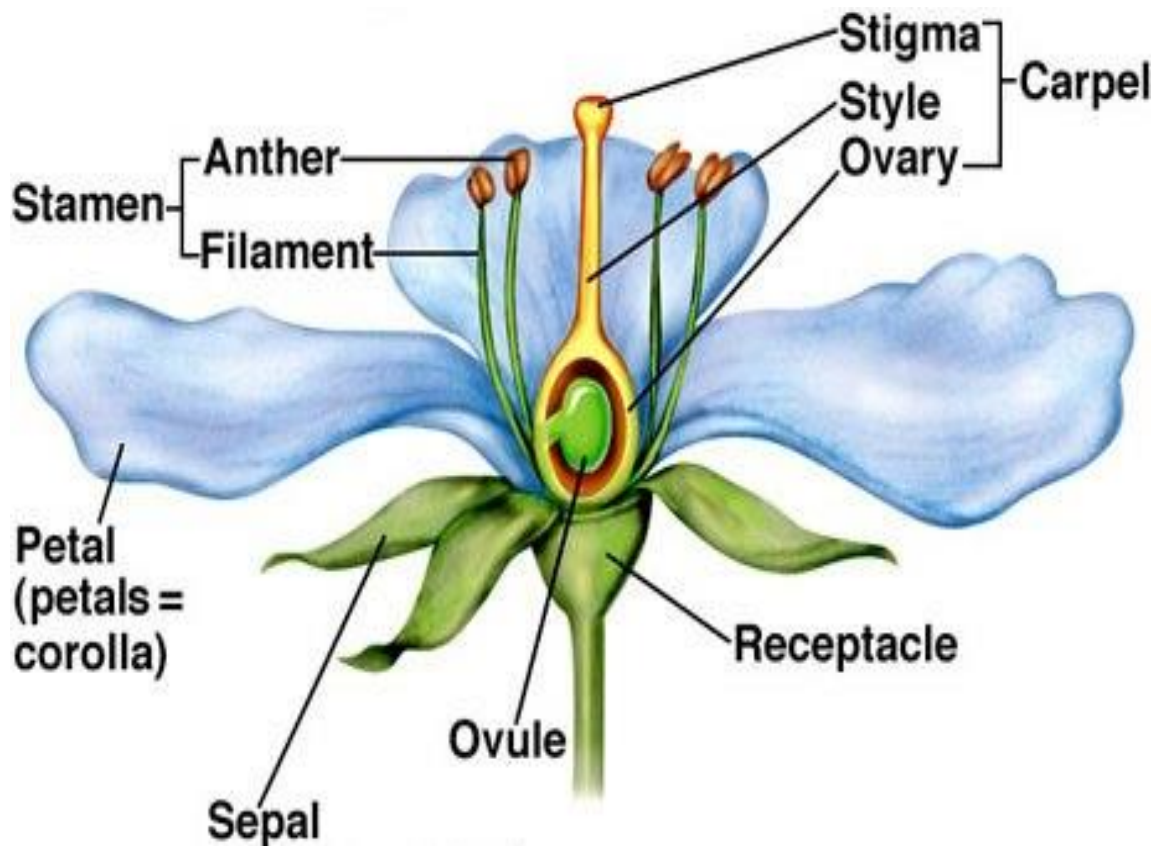
Study sheet : The Parts of the flower

Date:

Grade-Section: 8CS

Objective : Recognise each part of a flower and describe its function .

- The diagram below represent the main parts of a flower .





- Classify the parts of the flower into reproductive parts and non-reproductive parts.

Reproductive parts	Non- reproductive parts
<p>Male organs:</p> <p>Stamen</p> <p>Female organs:</p> <p>Carpel</p>	<p>Sepals</p> <p>Petals</p> <p>Stalk</p> <p>Receptacle</p>

- Identify the function of each part.

Part	Function
Anther	Releases the pollen
Filament	Supports the anther
Stigma	Receives the pollen during pollination
Style	Transports the pollen (male gamete) to the ovary for fertilization through the pollen tube.
Ovary	Where fertilization occurs.
Ovule	Carries the egg cells - female gamete
Sepals	Protect the flower when it is a bud
Petals	Attract insects for pollination
Stalk	To provide support for the flower.





The National
Orthodox School
Shmaisani

Accredited by



 Cambridge Assessment
International Education
Cambridge International School

edexcel 

 CIS
COUNCIL OF
INTERNATIONAL
SCHOOLS



مُعْتَمَدَةٌ مِنْ