

The Primary Stage of Grades (4-5) School Year 2022 - 2023

Name: _____

Subject: Cells worksheet #1

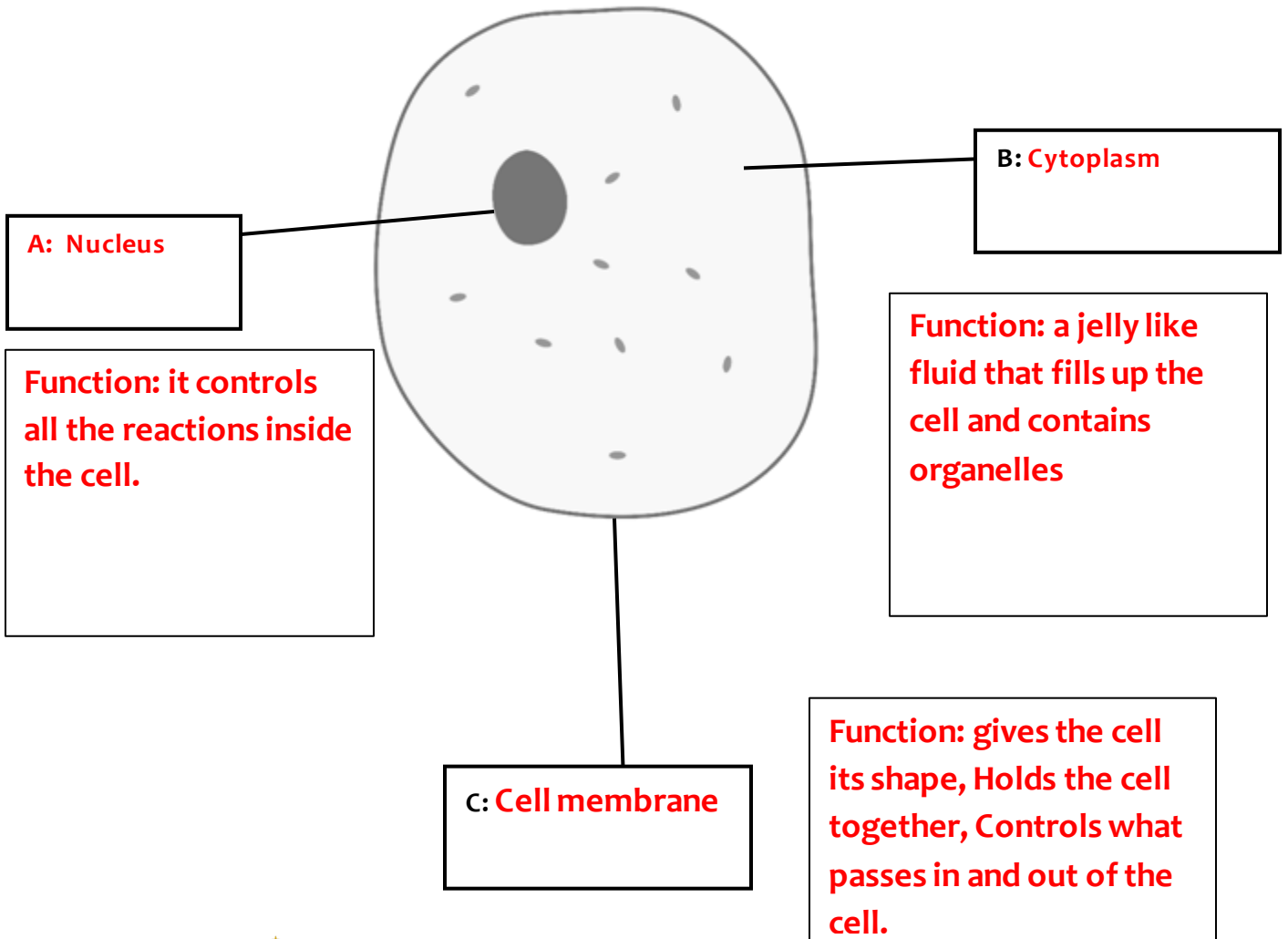
Date: / /

Class: Grade Five national (All Sections)

Objectives: -Identify the parts of a cell.
-Differentiate between an animal cell and a plant cell.

Q1: The diagram below shows an animal cell.

Label the three main parts of the cell and state the function of each part.



Q2: Describe the function of the following organelles.

1- Mitochondria:

Supplies the cell with energy.

2- Chloroplast:

Contain chlorophyll which gives plants their color and essential for photosynthesis.

3- Vacuole:

Open spaces that hold food, water and wastes.

Q3: Fill in the following table about differences and similarities in animal and plant cells by adding a tick (✓) in the correct column.

	Animal cells	Plant cells
Nucleus	✓	✓
Cell membrane	✓	✓
Cytoplasm	✓	✓
Cell wall		✓
Chloroplast		✓
Mitochondria	✓	✓
Large vacuole		✓