

The Primary Stage of Grades (4-5) School Year 2022 - 2023

Name: _____

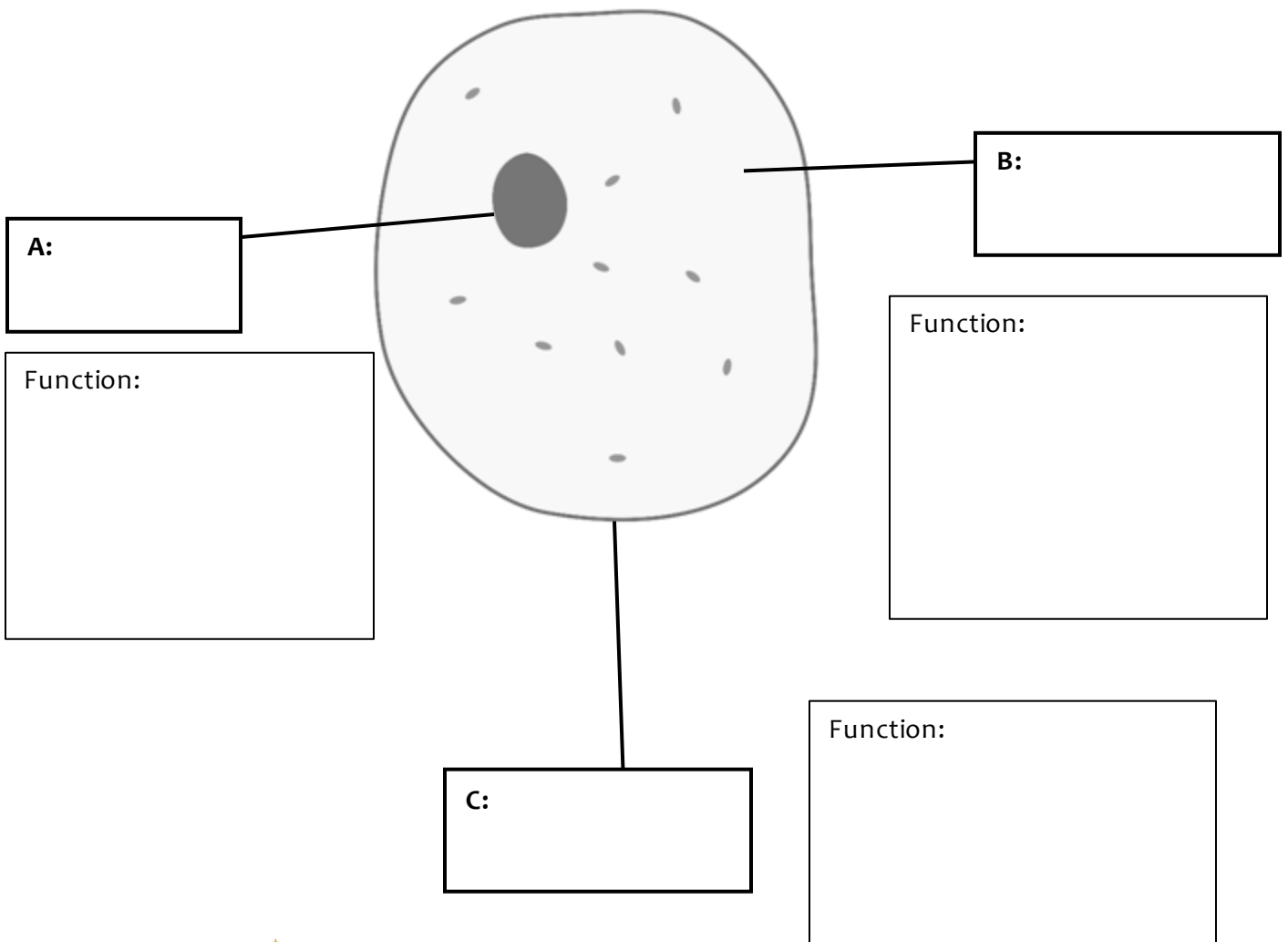
Subject: Cells worksheet #1

Date: / /

Class: Grade Five national (All Sections)

Objectives: -Identify the parts of a cell.
-Differentiate between an animal cell and a plant cell.

Q1: The diagram below shows an animal cell.
Label the three main parts of the cell and state the function of each part.



Q2: Describe the function of the following organelles.

1- Mitochondria:

.....
.....

2- Chloroplast:

.....
.....

3- Vacuole:

.....
.....

Q3: Fill in the following table about differences and similarities in animal and plant cells by adding a tick (✓) in the correct column.

	Animal cells	Plant cells
Nucleus		
Cell membrane		
Cytoplasm		
Cell wall		
Chloroplast		
Mitochondria		
Large vacuole		