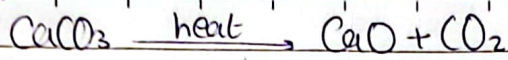
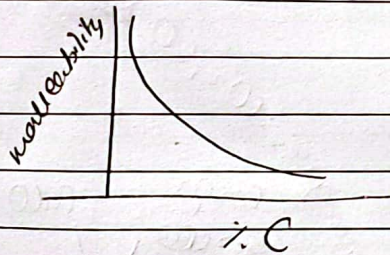
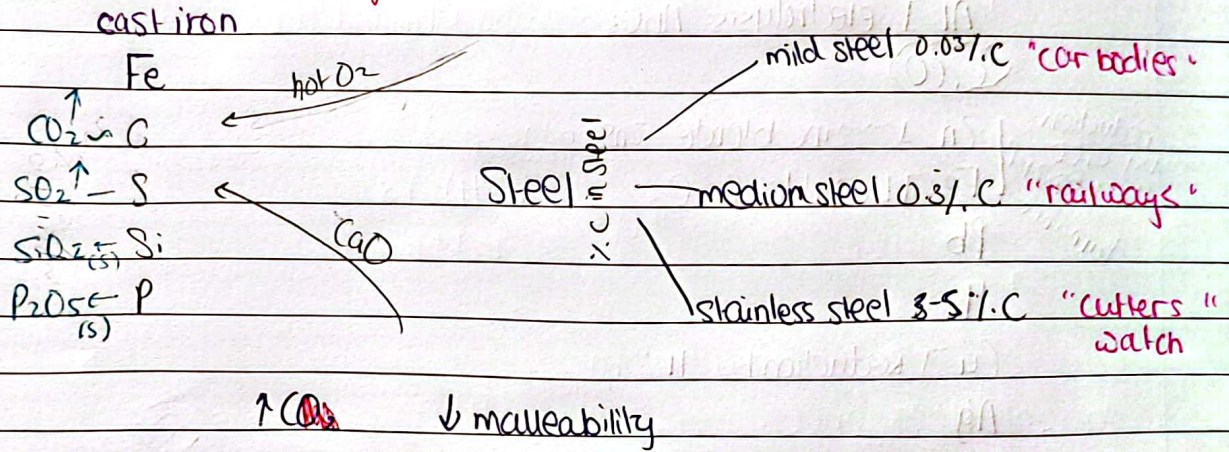


Thermal decomp.



base                  acid                  calcium silicate  
slag

### Steel Making "Oxygen Base Process"



\* Alloy: mixture of metal with another metal or semi-metal.

Brass      Cu, Zn

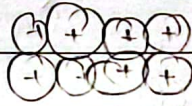
Bronze      Cu, Sn

Steel      Fe, C, Ni, Cr

Metal  
Cu



Brass  
Cu, Zn



however  
diff. size of  
metals