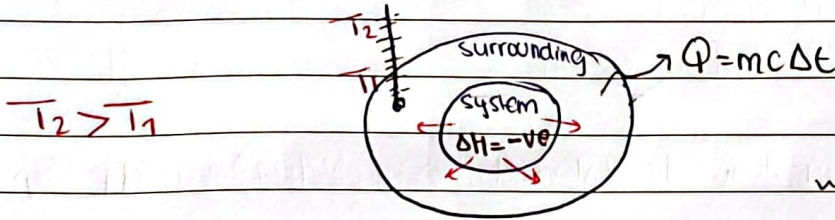


Energetics

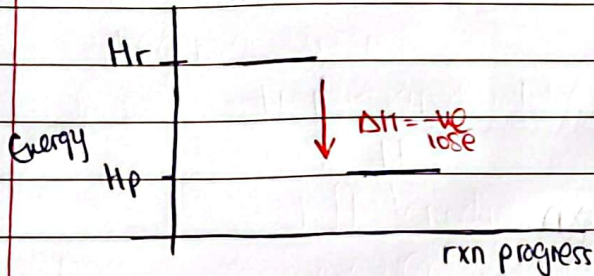
Exothermic

Reactions that give out (release) energy to the surrounding.



more stable (if energy) $\Delta H = -ve$
less " " " " " "

For system (energy level diagram)

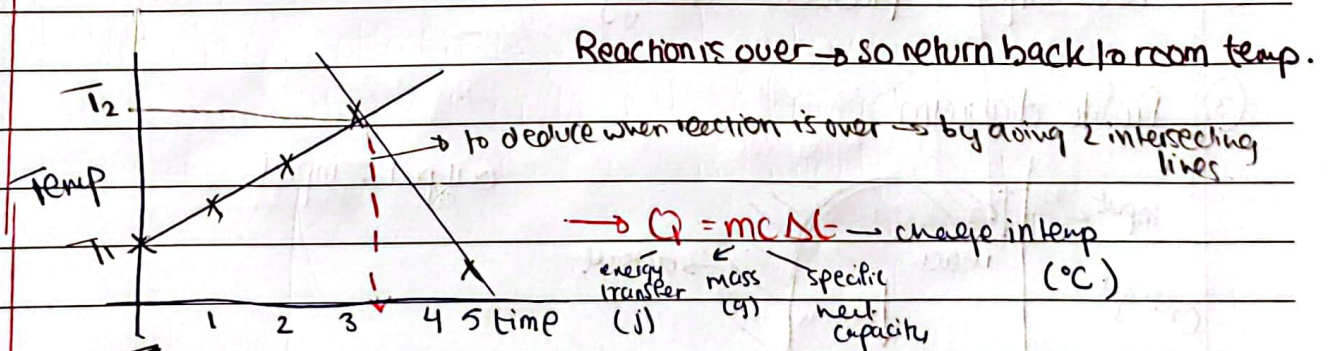


Enthalpy: Heat contents
"stored energy"

H_r : enthalpy of reactants

H_p : enthalpy of products

For surrounding (Temp diagram)



$\uparrow Q$ more exothermic
 $\uparrow \Delta t$