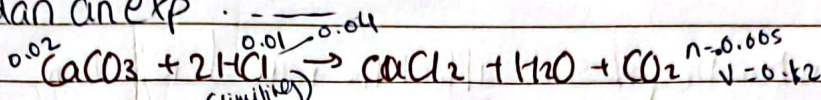


- So faster rate of reaction

needed = 0.005
add = 0.05

* plan an exp



Exp 1 = mass of
CaCO₃ = 2g
lumps
Hr = 60

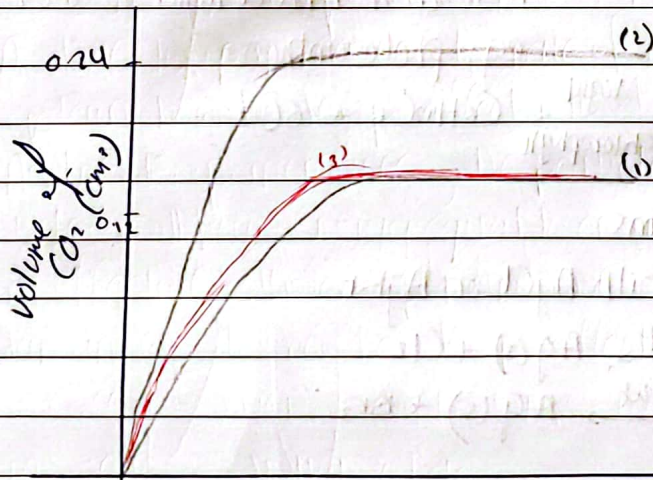
V HCl = 0.1 dm³
M HCl = 0.1 Mol/dm³
Temp = 25°C

Exp 2 = mass of
CaCO₃ = 2g
lumps

V HCl = 0.1 dm³
M HCl = 0.2 Mol/dm³
Temp = 25°C

Exp 3 = mass of
CaCO₃ = 4g
lumps

V = 0.1 dm³
M = 0.1 mol/dm³
Temp = 25°C



* More limiting → faster rate
more product

* More excess → faster rate.