The background features several abstract blue watercolor-style shapes. In the top left, there are two overlapping, soft-edged shapes. On the right side, there is a curved, striped pattern consisting of several parallel blue lines. At the bottom left, there is a cluster of small, dark blue dots of varying sizes. A large, light blue, irregular shape is positioned at the bottom right, partially overlapping the text area.

Tia Beiruty, Jana Momani, Nabeel Zureiqat, and Muna
Ishnaneh

Behind the Scenes

This is the progress ,and the steps to our project.

Table of contents

01

Video

The link to our short
movie

02

Focus

The focus of our project

03

Research

The citations and
crosschecking

04


Script

What we said during the
project

05

Terminology

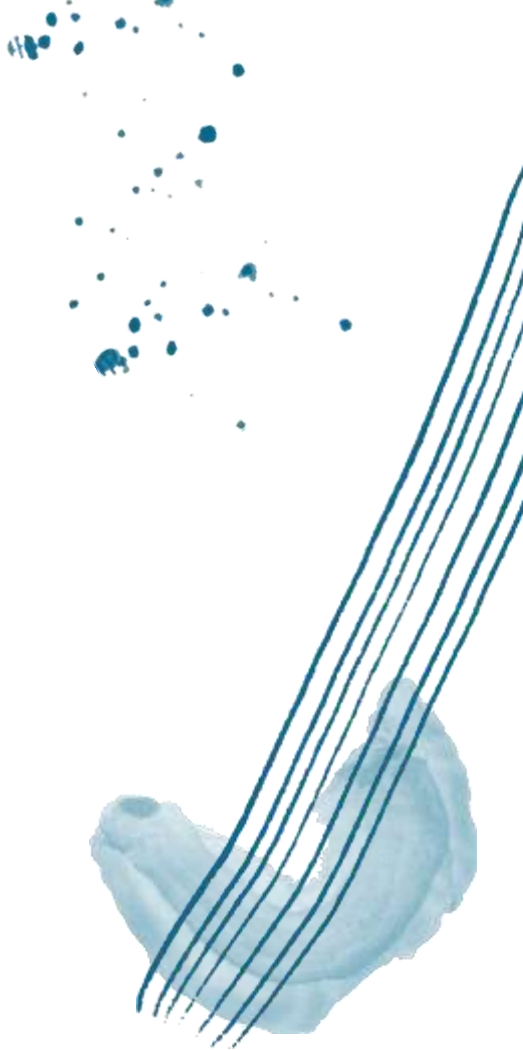
You can describe the
topic of the section here



01

Video

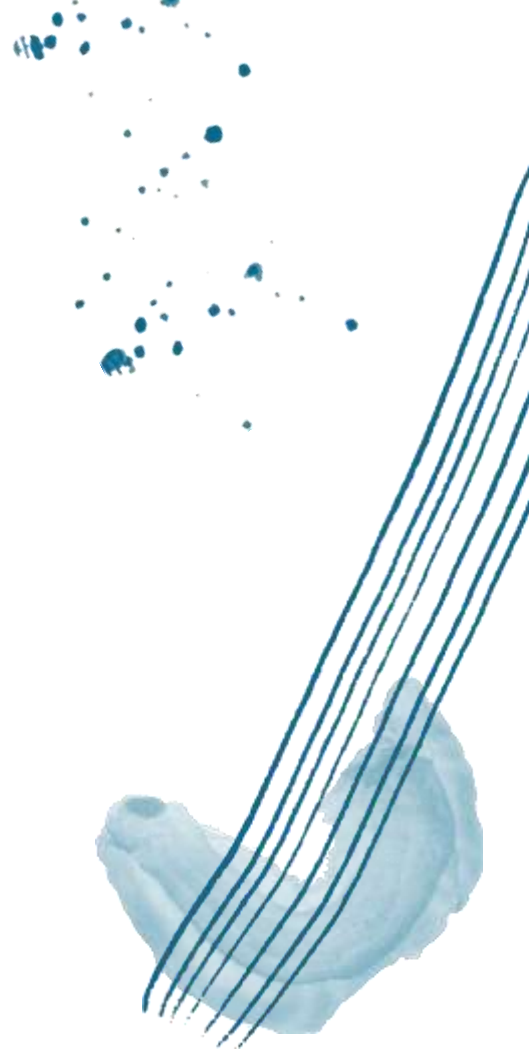
Here is the link =>
<https://youtu.be/8uKn6eJlvfU>





02

Focus



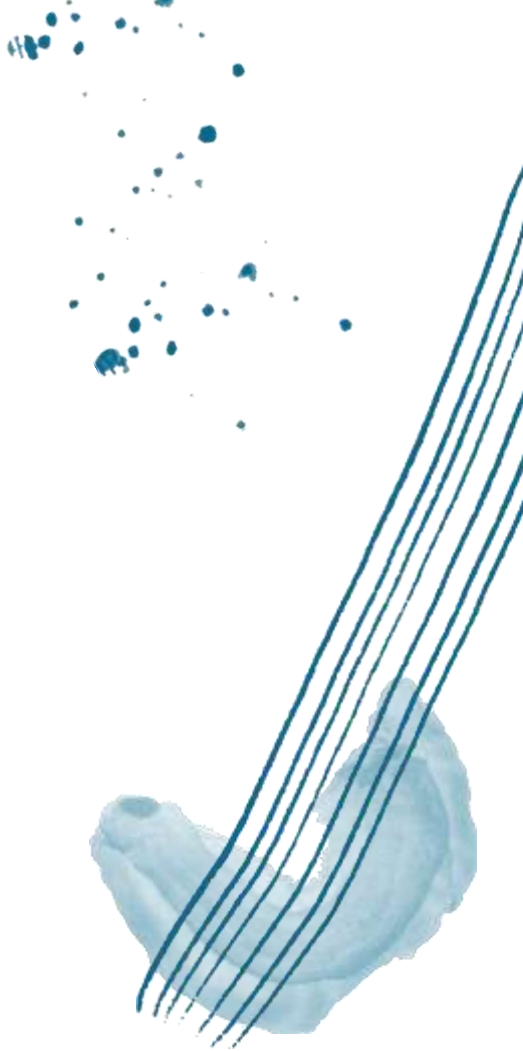
Topic	Dyslexia
Focus	Focusing on the world from a person with dyslexia's perspective.
Audience	Elementary
Presentation	Short Movie
Research Questions	<ol style="list-style-type: none">1. What does a dyslexic person see?2. What is dyslexia?3. What are the effects of dyslexia?4. What are the symptoms of dyslexia?5. What causes dyslexia?6. How can we treat a person with dyslexia?7. Why do dyslexic people use colored paper?8. Why do they have spelling issues?9. How can I make a dyslexic person feel comfortable?10. How do we make dyslexic people feel accepted?
Methodologies	Document Analysis



03

Research

Citations and
crosschecking





What is dyslexia?

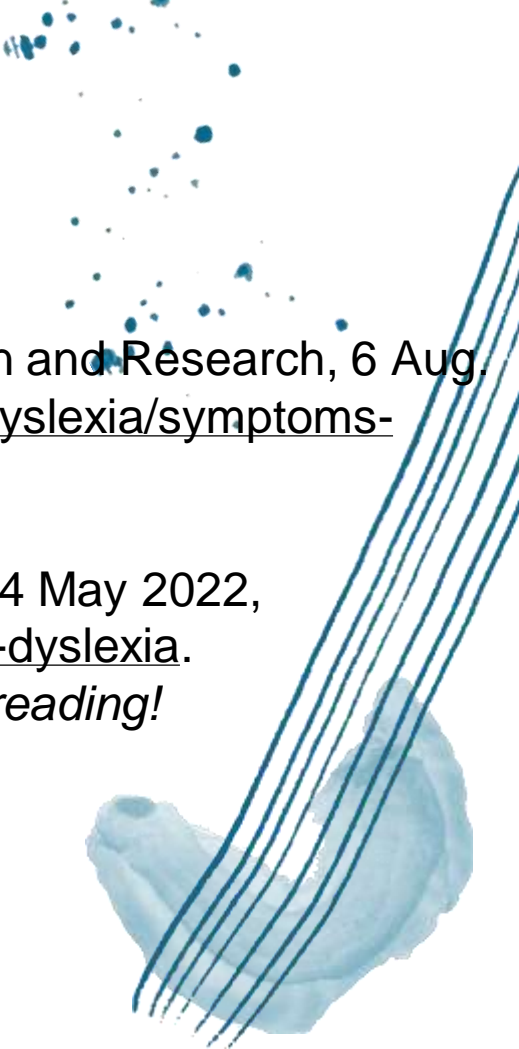
From

“Dyslexia.” *Mayo Clinic*, Mayo Foundation for Medical Education and Research, 6 Aug. 2022, <https://www.mayoclinic.org/diseases-conditions/dyslexia/symptoms-causes/syc-20353552>.

And

Team, Understood. “What Is Dyslexia.” *Understood*, 4 May 2022, <https://www.understood.org/en/articles/what-is-dyslexia>.

We found => *Dyslexia is a learning disability in reading!*



What does a dyslexic person see?

From

Kelly, Kate. "FAQs about Dyslexia, Reversing Letters, and Writing Letters Backwards." *Understood*, 26 Apr. 2022, <https://www.understood.org/en/articles/faqs-about-reversing-letters-writing-letters-backwards-and-dyslexia?>

and

Wnuk, Alexis. "Do People with Dyslexia Read and Write Backwards?" *BrainFacts.org*, <https://www.brainfacts.org/diseases-and-disorders/childhood-disorders/2018/do-people-with-dyslexia-read-and-write-backwards-082218>.

We found => Dyslexics see letters backwards

Why do dyslexic people use colored paper?

From

Uccula, Arcangelo, et al. "Colors, Colored Overlays, and Reading Skills." *Frontiers*,
Frontiers, 1 Jan. 1AD,
<https://www.frontiersin.org/articles/10.3389/fpsyg.2014.00833/full>

and

Denton, Tiffany Freeze, and James N Meindl. "The Effect of Colored Overlays on
Reading Fluency in Individuals with Dyslexia." *Behavior Analysis in Practice*,
Springer International Publishing, 12 Aug. 2015,
<https://www.ncbi.nlm.nih.gov/pmc/articles/PMC4999357/>.

We found => That colored paper relieves visual stress which decreases symptoms.

Why do dyslexic people use colored paper?

From

Uccula, Arcangelo, et al. "Colors, Colored Overlays, and Reading Skills." *Frontiers*,
Frontiers, 1 Jan. 1AD,
<https://www.frontiersin.org/articles/10.3389/fpsyg.2014.00833/full>

and

Denton, Tiffany Freeze, and James N Meindl. "The Effect of Colored Overlays on
Reading Fluency in Individuals with Dyslexia." *Behavior Analysis in Practice*,
Springer International Publishing, 12 Aug. 2015,
<https://www.ncbi.nlm.nih.gov/pmc/articles/PMC4999357/>.

We found => That colored paper relieves visual stress which decreases symptoms.

What are the effects of dyslexia?

From

Team, Understood. "Skills Affected by Dyslexia." *Understood*, 12 Feb. 2021, <https://www.understood.org/en/articles/skills-that-can-be-affected-by-dyslexia>.

And

"Understanding Dyslexia: What Are the Effects of Dyslexia." *National Center on Improving Literacy*, 11 Mar. 2020, <https://improvingliteracy.org/brief/understanding-dyslexia-what-are-effects-dyslexia>.

-Have poor spelling and messy handwriting.

-Avoid reading out loud.

-Confuse words that sound alike.

-Not be able to sound out words..

What are the symptoms of dyslexia?

From

"Dyslexia." Mayo Clinic, Mayo Foundation for Medical Education and Research, 6 Aug. 2022, <https://www.mayoclinic.org/diseases-conditions/dyslexia/symptoms-causes/syc-20353552>.

And

"Symptoms of Dyslexia." *Mind Test*, 28 July 2022, <https://www.mind-test.org/blog/dyslexia/symptoms-of-dyslexia/>.

-Difficulty of spelling

-Difficulty seeing (and occasionally hearing) similarities and differences in letters and words

-Poor writing skills and difficulties with dictation or even copying text.

From

"Dyslexia." Mayo Clinic, Mayo Foundation for Medical Education and Research, 6 Aug. 2022, <https://www.mayoclinic.org/diseases-conditions/dyslexia/symptoms-causes/syc-20353552>.

And

The Dyslexia Resource. "Important Signs of Dyslexia in Elementary School Students." The Dyslexia Resource, 18 Dec. 2020, <https://dyslexiaresource.org/important-signs-of-dyslexia-in-elementary-school-students/>.

-Reading Below Grade Level

What causes dyslexia?

from

Possible Causes of Dyslexia. 22 Feb. 2021,
<https://understood.org/en/articles/dyslexia-possible-causes>.

and

“Dyslexia - Symptoms and Causes.” Mayo Clinic, 6 Aug. 2022,
<https://mayoclinic.org/diseases-conditions/dyslexia/symptoms-causes/syc-20353552>.

We found=> Dyslexia results from individual differences in the parts of the brain.

Why do they have spelling issues?

from

Learning and Thinking Differences That Cause Trouble With Spelling. 14 Jan. 2021,
www.understood.org/en/articles/learning-and-thinking-differences-that-cause-trouble-with-spelling.

and

“---.” International Dyslexia Association, 24 July 2017,
<https://dyslexiaida.org/spelling>.

We found => dyslexia makes it hard to isolate the sounds in words, match those sounds to letters, and blend sounds into words.

How do we make dyslexic people feel accepted?

From:

Martinelli, Kartherine. "Understanding Dyslexia." Child Mind Institute, 21 Sept. 2022, <https://childmind.org/article/understanding-dyslexia/>.

And:

Ryan, Michael. "Social and Emotional Problems Related to Dyslexia." *LD OnLine*, <https://www.ldonline.org/ld-topics/reading-dyslexia/social-and-emotional-problems-related-dyslexia>.

We found => Acknowledge their effort and celebrate hard work, even if there are still mistakes and be extremely supportive and encouraging and help them recognise their strengths and DON'T discourage them which will ruin their self-image and DO combat negative self-talk

How can we treat a person with dyslexia?

From:

Martinelli, Kartherine. "Understanding Dyslexia." Child Mind Institute, 21 Sept. 2022, <https://childmind.org/article/understanding-dyslexia/>.

And:

Korbey, Holly. "Technology Tools That Can Help Dyslexic Students." *KQED*, 27 Nov. 2019, <https://www.kqed.org/mindshift/54921/technology-tools-that-can-help-dyslexic-students>.

We found => using assistive technology such as listening to audiobooks

Also:

From:

Dyslexia." *Mayo Clinic*, Mayo Foundation for Medical Education and Research, 6 Aug. 2022, <https://www.mayoclinic.org/diseases-conditions/dyslexia/diagnosis-treatment/drc-20353557>.

And:

"Treating Dyslexia - Smart Kids." *Smart Kids* -, 21 June 2021, <https://www.smartkidswithld.org/getting-help/dyslexia/treating-dyslexia/>.

We found => Increasing vocabulary of recognised and understood words helps

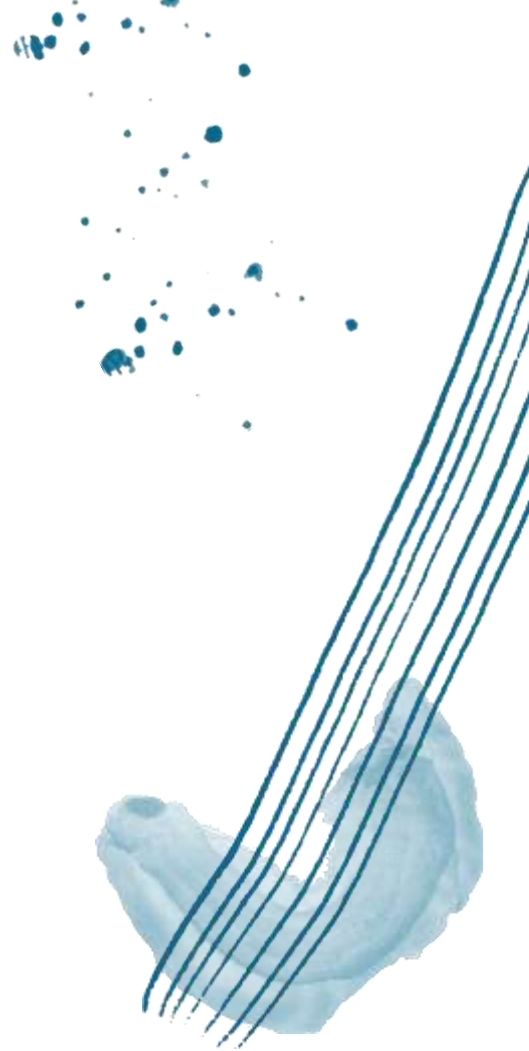
We conclude => using assistive technology such as listening to audiobooks and increasing vocabulary of recognised and understood words helps



04

Script

The script we used to
follow the video





Tia: Hello students! Let's play a little game! Try to read what's written in these photos. (hand position)

Could you do it? This is what people that have _____

Jana: CORONAVIRUS! (In a very exaggerated, fun and loud noise)

Tia: NO!

Muna: A FEVER!

Tia: WHAT? NO!

Nabeel: Dyslexia!

Jana: Dyslexia?

Muna: What is that? (Insert question GIF)

Nabeel: Dyslexia is a learning disability in reading! It affects many parts of life! Let's learn more!

Muna: Oh! I know what dyslexia is! People with dyslexia see letters backwards. (hand movement) Can you read this word? (pause for 3 seconds) It says backward! How ironic!

Tia: Did you know that people with dyslexia use colored paper? (Throw colored paper) It decreases visual stress which decreases other symptoms! Nabeel: But what are the symptoms?

Jana: The symptoms are: Difficulty seeing and sometimes speaking! They also have poor writing skills! Another symptom is poor spelling skills!

Tia: What do you mean poor spelling skills?

Jana: Time for a skit! (Insert woohoo picture) (dramatic transition) (Nabeel and Muna please change your hair and outfits in an extremely exaggerated manner.)

Nabeel *Teacher Edition*: Good morning students! What a lovely day! Time for a spelling test!

Muna *Student Edition*: Um, Mr. Alexander?

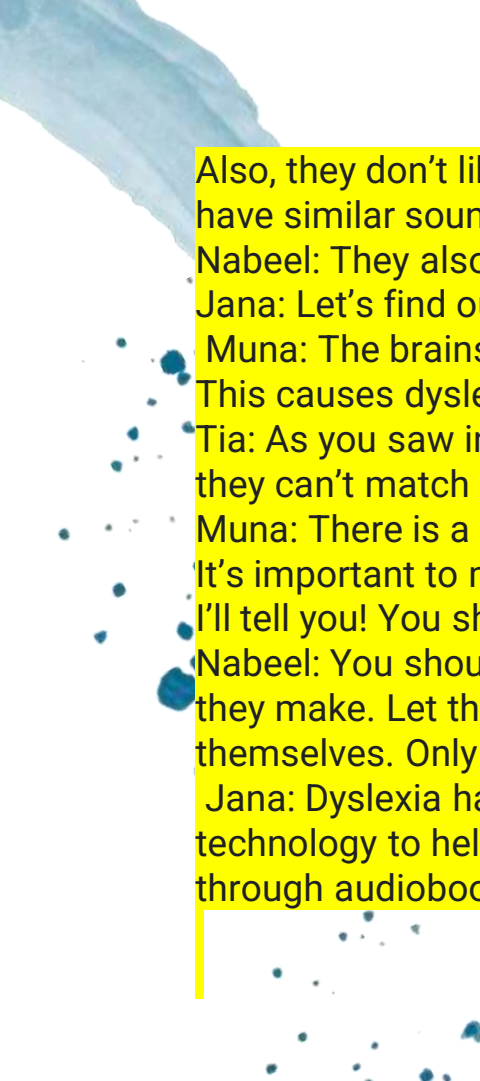
Nabeel *Teacher Edition*: What?

Muna *Student Edition*: I have dyslexia! I can't spell easily!

Nabeel *Teacher Edition*: Please try! I won't grade it for you.

Muna *Student Edition*: Uh oh Nabeel *Teacher Edition*: Raise your hand to answer. First word is DOG!

Muna *Student Edition*: (Raises Hand)



Also, they don't like reading out loud! They can't tell the difference between words that have similar sounds such as moon and spoon.

Nabeel: They also can't sound out words like alpha (clap) a (clap) bet (clap)

Jana: Let's find out more about the causes of dyslexia!

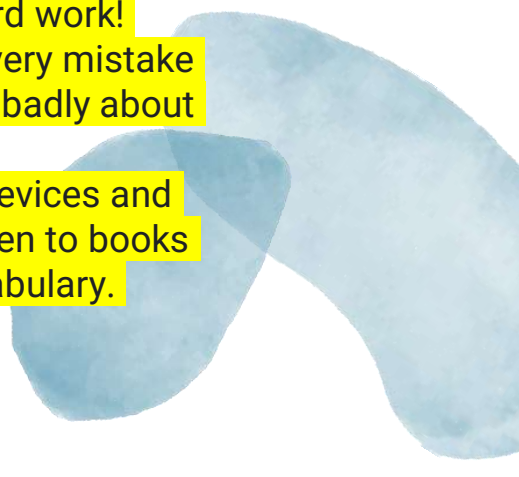
Muna: The brains of people with dyslexia are a little different than other people's brains. This causes dyslexia!

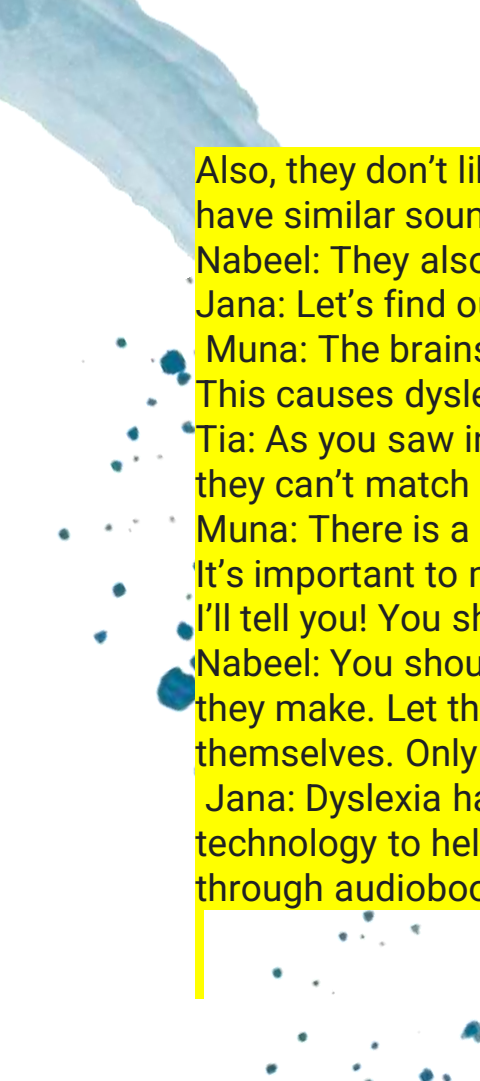
Tia: As you saw in the skit, people with dyslexia can't spell easily. Why is that? Because they can't match sounds they hear to the letters they write.

Muna: There is a chance that you don't have dyslexia ,but your friend or classmate does. It's important to make sure that they feel accepted. Are you wondering how to do that? I'll tell you! You should appreciate their effort and celebrate all of their hard work!

Nabeel: You should also tell them what they're good at. Don't point out every mistake they make. Let them believe in themselves and stop them when they talk badly about themselves. Only allow positive talk

Jana: Dyslexia has no cure when it comes to medicine ,but we can use devices and technology to help them. Instead of giving them books, allow them to listen to books through audiobooks. Moreover, help them get comfortable with new vocabulary.





Also, they don't like reading out loud! They can't tell the difference between words that have similar sounds such as moon and spoon.

Nabeel: They also can't sound out words like alpha (clap) a (clap) bet (clap)

Jana: Let's find out more about the causes of dyslexia!

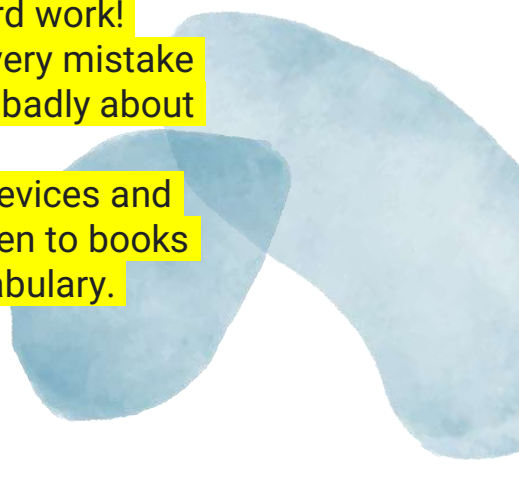
Muna: The brains of people with dyslexia are a little different than other people's brains. This causes dyslexia!

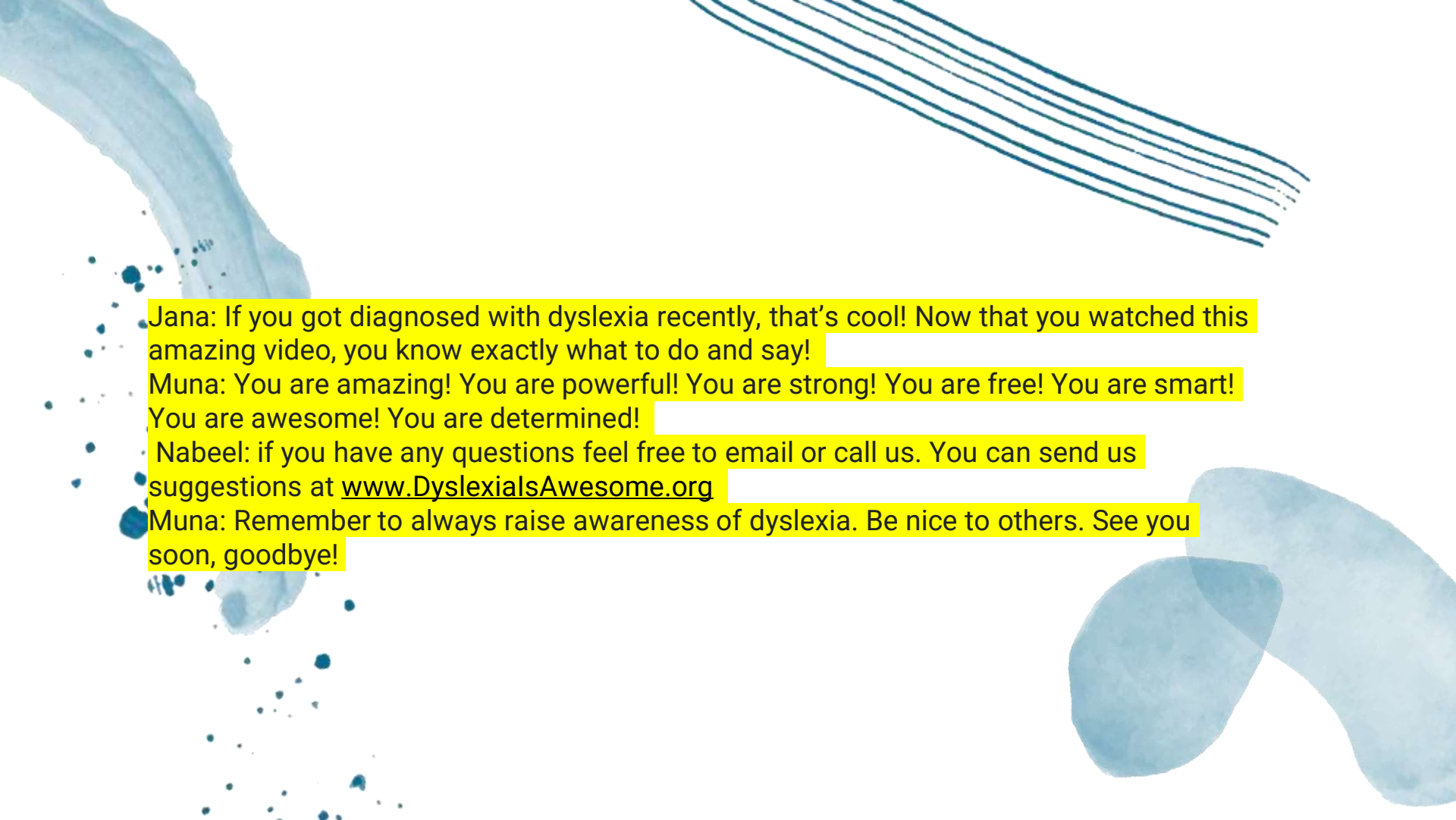
Tia: As you saw in the skit, people with dyslexia can't spell easily. Why is that? Because they can't match sounds they hear to the letters they write.

Muna: There is a chance that you don't have dyslexia ,but your friend or classmate does. It's important to make sure that they feel accepted. Are you wondering how to do that? I'll tell you! You should appreciate their effort and celebrate all of their hard work!

Nabeel: You should also tell them what they're good at. Don't point out every mistake they make. Let them believe in themselves and stop them when they talk badly about themselves. Only allow positive talk

Jana: Dyslexia has no cure when it comes to medicine ,but we can use devices and technology to help them. Instead of giving them books, allow them to listen to books through audiobooks. Moreover, help them get comfortable with new vocabulary.





Jana: If you got diagnosed with dyslexia recently, that's cool! Now that you watched this amazing video, you know exactly what to do and say!

Muna: You are amazing! You are powerful! You are strong! You are free! You are smart! You are awesome! You are determined!

Nabeel: if you have any questions feel free to email or call us. You can send us suggestions at www.DyslexialsAwesome.org

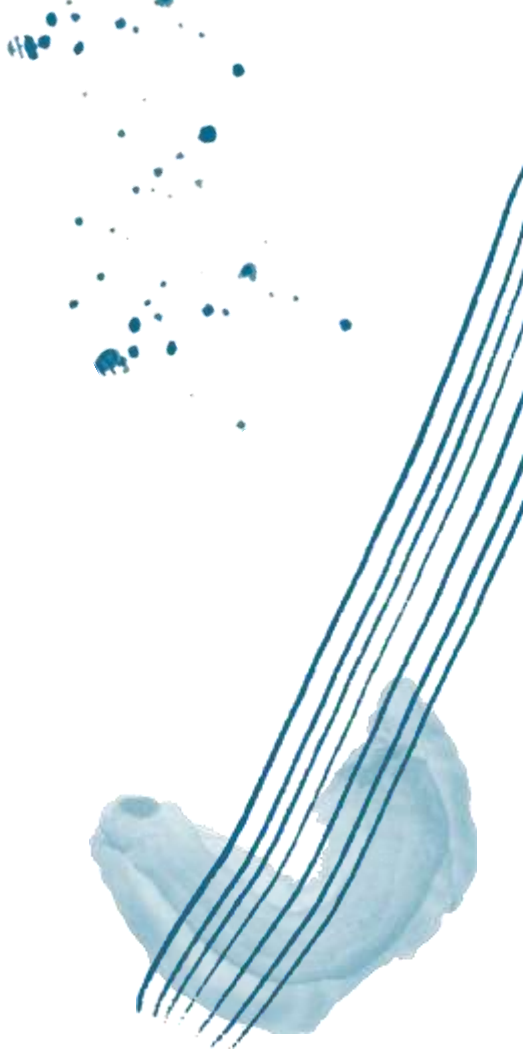
Muna: Remember to always raise awareness of dyslexia. Be nice to others. See you soon, goodbye!



05

Terminology

Note that we didn't use a lot of terminology due to our audience being elementary.



Terminology



Dyslexia

Learning disability



Diagnose

When you visit a doctor, and professionally find out your disease, sickness, etc.



Visual Stress

Strain on the eye



**THANK
YOU**

